

Bonchuk Farms

BULL
S A L E

Tuesday **9** **2021**
MAR.

1:00PM HEARTLAND LIVESTOCK VIRDEN, MB

BULL

Bonchuk Farms

BULL SALE

Tuesday **MAR. 9** 2021

- ◆ 1:00 PM
- ◆ HEARTLAND LIVESTOCK
- ◆ VIRDEN, MB

Welcome to the 11th Annual Bull Sale!

Welcome to the 2021 edition of our Bonchuk Farms Annual Bull Sale. We look forward to working with our great customers and meeting new ranchers that might be looking for herd bulls. We have developed many long lasting friendships and truly treasure these relationships. All of us have a common goal and that is the production of high quality beef for the world. We are passionate about what we do and look forward to helping you to choose a herd sire that will make your program go into the direction you need.

We know our cows and the sires we are using, they are capable of increasing your profits.

It is herd bull buying time – make your choices wisely and profitability will follow!

We have an exciting group of bulls for your evaluation. The yearling bulls are our strongest pen yet, and there is an exceptional group of two-year-olds. Herd bull selection is a major decision and producers should be as informed as possible. We welcome all calls and visits to help answer any questions you may have. The bulls are always available for viewing at the farm anytime. They will be in Virden, on Sunday before the sale. Give anyone of us a call if you have any questions or the T Bar C staff – Chris, Shane or Ben. They have been through the bulls and will be happy to help. Mark Shologan and his staff at DLMS will be live broadcasting our event. We will have all the lots on video by the capable crew of DLMS.

We hope you will join us in Virden on Tuesday, March 9, 2021 to evaluate our offering and share in our Bonchuk style of hospitality in these times.

Visitors are always welcome – where the coffee is always on, the beer is cold and the perogies are homemade.

Bonchuk Farm Families

Bonchuk Farms

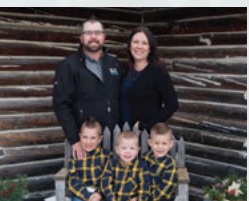
Box 34, Solsgirth, Manitoba R0J 2B0
www.bonchukfarms.com



Dave & Marnee Bonchuk
204-842-3706 or 204-773-0467
bonchuk@goinet.ca
bonchukfarms99@gmail.com



Wayne & Charlene Bonchuk
204-842-3859 or 204-796-0004
bonchuks@mts.net



Tyler, Holly & Family

On Offer

116 HEAD ON OFFER...

- BULLS
- FULLBLOODS RED & BLACK
- PUREBREDS

SALE SCHEDULE

Sunday - Monday
11:30 AM
1:00 PM

Cattle will be at Heartland for viewing
Perogy Lunch
Bonchuk Farms Bull Sale

..... From the desk at T Bar... ..

Welcome to the 21st Annual Bonchuk Farms Simmental Bull Sale, Tuesday, March 9, 2021 at Heartland Livestock, Virden, Manitoba. This bull sale bills as one of the feature events in the spring bull sale season and you can have the opportunity to select a "Bonchuk Brand Sire."

Many do not realize the scope of the Bonchuk Farms operation. To produce and supply over a hundred bulls or more each spring, another hundred bred females in the fall female sale and those who go back into the replacement pasture, it takes a lot of brood cows and a lot of ground to accommodate this breeding establishment. It is said that "necessity breeds invention or change" and over the decades this breeding operation evolved into a highly efficient seedstock operation running many females with a limited staff. The strength of a powerful cow herd, with prudent sire selection has yielded an efficient high-quality product which has added value to their many customers bottom line... hence the pen name "Bonchuk Brand Sire".

The 2021 edition offers many avenues of opportunity in your spring bull selections. The yearling bulls are uniform in type and kind... full of muscle expression, deep bodied, thick topped, optimal in birth weight and full of hair. Red, black or fullblood, the selection is diverse in genetics but not in quality. The two-year-old bulls are bulls saved for this sale. Many are later born in addition to several which are retained for customer convenience if anyone has a bull wreck... Bonchuk's first concern is that you get your cows bred with a quality sire. These twos are rugged, athletic, and designed to cover more ground and run with more cows.

The bulls will be in Virden the Sunday and Monday prior the sale or plan to visit the farm any time before and preview this powerful offering of Simmental herd improvers. Do not hesitate to give any of the Bonchuk crew a call and discuss which bulls are suitable for your breeding needs... they love to visit cattle.

If we may be of assistance, prior to or sale day, feel free to contact any of the T Bar Team or myself, we will help you in a professional manner.

For Bonchuk Farms,
Chris Poley

SALE MANAGEMENT



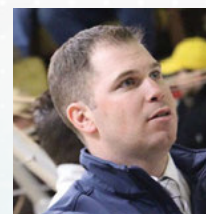
T Bar C Cattle Co. Ltd.
Box 2330
Warman, SK S0K 4S0
Ph: 306-933-4200
Fax: 306-934-0744
info@tbarc.com
www.buyagro.com



Chris Poley



Shane Michelson



Ben Wright

..... SALE DAY INFORMATION

SALE DAY PHONES

Chris Poley	306-220-5006
Shane Michelson	403-363-9973
Ben Wright	519-374-3335
Dave & Marnee Bonchuk	204-842-3706 or 204-773-0467
Wayne & Charlene Bonchuk	204-842-3859 or 204-796-0004
Richie Joynt	204-724-6838

SALE STAFF

Auctioneer , Chris Poley	306-220-5006
Ringman , Ben Wright	519-374-3335
Ringman , Shane Michelson	403-363-9973

VIEW THE CATALOGUE AND VIDEOS ONLINE AT:

WWW.BUYAGRO.COM

WWW.BONCHUKFARMS.COM

CATALOGUE DESIGN



INSURANCE

Alameda Agencies, Bonnie Thompson 306-489-2258

WATCH & BID ONLINE



REDS



lot **1**

BLCC *Mr Crosby* 2G

KOP CROSBY 137W
BLCC MR CROSBY 25E
 BLCC MISS TEDDY 15W

SPRINGCREEKWALLBANGER 11Z
BLCC MISS WALLBANGER 108E
 BLCC MISS RED ROCK 184W

MUIRHEAD LIVE WIRE 95R
 KOP MS BENGIE 6P
 WHEATLAND RED TEDDY 457P
 BLCC MISS BRAVADO 5T
 HARVIE JDF WALLBANGER111X
 SPRINGCREEK LINNE 72S
 KWA RED ROCK 5T
 BLCC MISS STING 235T

BL	CE	BW	WW	YW	MILK	MCE	MWWT
	5.9	4.7	81.9	122.2	32.1	5.1	73.0

- ◆ POLLED PUREBRED
- ◆ NOT REGISTERED
- ◆ BLCC 2G
- ◆ JANUARY 10, 2019
- ◆ BW: 94 LBS
- ◆ ACT WW: 870 LBS

A long bodied, wide topped beef bull, sired by a son of Crosby that will certainly do a great job of siring a tremendous calf crop with thickness, do-ability, style and eye appeal. Great temperament and excellent feet, this bull will be ready for heavy service this spring. The dam is a great young female that we are really liking. We failed to collect hair for natural service on 2G's great sire so he will sell without papers.



lot **2**

BLCC *Mr Red Mountain* 52G

IPU RED WESTERN 49X
KWA FLYF RED MOUNTAIN 16Z
 KWA MS ROCK 14X

SILVER LAKE DEALER 60B
BLCC MISS SL DEALER 178E
 BLCC MISS BARONESS 251Y

WS BEEF MAKER R13
 IPU 52N POCAHONTAS 215U
 KWA RED ROCK 5T
 KWA MS BARON 9U
 CHAMPS ROMANO
 BLCC MISS STRIDE 57W
 BHR BARON SA 2842P
 BLCC MISS MARIANA 180M

BL	CE	BW	WW	YW	MILK	MCE	MWWT
	7.1	3.6	70.0	106.2	34	2.4	69.0

- ◆ SCURRED PUREBRED
- ◆ PENDING
- ◆ BLCC 52G
- ◆ FEBRUARY 14, 2019
- ◆ BW: 70 LBS
- ◆ ACT WW: 735 LBS

An eye appealing red baldy purebred that will provide calving ease, do-ability, eye appeal and marketability. Awesome temperament and structurally sound, he should sire a great calf crop. His full fleckvieh dam is a young female that can get the job done.



lot **3**

BLCC *Mr 5015C* 85G

WFL ABSOLUTE 51Y
R PLUS 5015C
 IPU MS. 56U LINER 15A

TNT STING M377
BLCC MISS STING 314U
 BLCC MISS 145R

LFE STRAIT UP 454W
 WFL MS BLACK FLASH 8068U
 SPRINGCREEK LINER 56U
 RTC/JETS UPTOWN GIRL 15U
 RC STINGER 072K
 MISS ARNOLD J1062
 MEYERS RED TOP
 HF/GFI RUBY RED 33E

CE	BW	WW	YW	MILK	MCE	MWWT
7.4	2.6	76.8	114.0	21.8	2.8	60.2

- ◆ POLLED PUREBRED
- ◆ PG1328431
- ◆ BLCC 85G
- ◆ FEBRUARY 18, 2019
- ◆ BW: 90 LBS
- ◆ ACT WW: 770 LBS

A low birth weight son of 5015C that will be predictable and profitable. Excellent calving ease and adequate performance is bred into this attractive two-year-old. His dam is an excellent uddered, big ribbed female that traces back to one of our foundation red cows, with an excellent production record. Poll test pending.



4

lot
4

BLCC *Mr Finest* **90G**

◆ POLLED PUREBRED
◆ PG1328437

◆ BLCC 90G
◆ FEBRUARY 18, 2019

◆ BW: 94 LBS
◆ ACT WW: 875 LBS

MRL RED WHISKEY 101B
PWK GIBSONS FINEST 6Y 52E
PWK MS PAULA 39W 6Y

ERIXON DEALER 63Z
BLCC MISS DEALER 200D
BLCC MISS POWERLINE 182W

TNT BOOTLEGGER Z268
MRL MISS 677Y
SUNNY VALLEY WISE GUY 80W
PWK MS PAULA 122P 39W
HARVIE JDF WALLBANGER111X
ERIXON LADY 35T
KENCO/MF POWERLINE 204L
TNT MISS AMERICANA E55

A standout son of Gibsons Finest that makes you notice him with his excellent spring of rib, capacity, depth, do-ability and eye appeal. Great performance, pleasing temperament and a fabulous cow family backing this bull. The dam traces back to one of our donor females, E55, whose production record was fantastic and she has many daughters and granddaughters in herd. Not much guesswork with this bull. 90G should sire an outstanding calf crop. Homo polled by pedigree.

CE	BW	WW	YW	MILK	MCE	MWWT
6.1	5.6	86.6	129.8	28.1	5.3	71.4



lot **5**

BLCC *Mr Finest* **111G**

MRL RED WHISKEY 101B
PWK GIBSONS FINEST 6Y 52E
 PWK MS PAULA 39W 6Y

LFE ROCHFORD 3013T
BLCC MISS ROCHFORD 277C
 BLCC MISS 150R

TNT BOOTLEGGER Z268
 MRL MISS 677Y
 SUNNY VALLEY WISE GUY 80W
 PWK MS PAULA 122P 39W
 LFE MR LEWIS 514N
 LFE CALYNA 31M
 PRL HOUSTON 005H
 TNT MISS WHOOPIE D92

CE	BW	WW	YW	MILK	MCE	MWWT
6.5	4.7	78.4	119.2	28.4	5.8	67.5

- ◆ POLLED PUREBRED
- ◆ PG1345551
- ◆ BLCC 111G
- ◆ FEBRUARY 21, 2019
- ◆ BW: 88 LBS
- ◆ ACT WW: 815 LBS

Moderate, thick made and beefy best describe this two-year-old. 111G will sire uniformity in his calf crop, add eye appeal and style, and his daughters should be impressive. Strong cow family behind this bull. 111G is ready for heavy service.



lot **6**

BLCC *Mr Standard* **132G**

NUG ROYAL RED 324A
MAF RED STANDARD 108C
 IPU 52N POCAHONTAS 215U

LFE BS LEWIS 322U
BLCC MISS STUBBY 118C
 BLCC MISS STING 338T

LFE BLACK LAKOTA 385W
 TRIPLE C SMARTY PANTS R
 TNT ACCELERATOR S226
 IPU RED POCAHONTAS 52N
 R PLUS BLACKEDGE
 LFE BS MS ARNOLD 135S
 TNT STING M377
 BLCC MISS KARMA 64K

CE	BW	WW	YW	MILK	MCE	MWWT
6.8	3.4	68.9	100.4	19.9	2.0	54.4

- ◆ POLLED PUREBRED
- ◆ PG1328485
- ◆ BLCC 132G
- ◆ FEBRUARY 23, 2019
- ◆ BW: 88 LBS
- ◆ ACT WW: 760 LBS

Red Standard has been a great sire of females, and his sons are proving to sire middle of the road progeny, adding characteristics like ease of fleshing, eye appeal, thickness and capacity. 118C is a tremendous producer that has an excellent udder and milks well. Poll test pending.



lot **7**

BLCC *Mr Finest* **134G**

MRL RED WHISKEY 101B
PWK GIBSONS FINEST 6Y 52E
 PWK MS PAULA 39W 6Y

KOP PONDEROSA 144Y
BLCC MISS PONDEROSA 19A
 BLCC MISS ROCHFORD 220X

TNT BOOTLEGGER Z268
 MRL MISS 677Y
 SUNNY VALLEY WISE GUY 80W
 PWK MS PAULA 122P 39W
 CMS TRADMARK 756T
 KOP MS BENGIE 6P
 LFE ROCHFORD 3013T
 BLCC MISS 38R

CE	BW	WW	YW	MILK	MCE	MWWT
6.9	4.6	86.1	126.6	31.0	6.8	74.1

- ◆ POLLED PUREBRED
- ◆ G1328488
- ◆ BLCC 134G
- ◆ FEBRUARY 23, 2019
- ◆ BW: 92 LBS
- ◆ ACT WW: 805 LBS

A long-bodied beef bull that is from a model female. 134G has style, thickness, great temperament and will sire a powerful group of offspring. The dam, 19A has been an excellent producer for us and has weaned one of the top heifer calves again last year. She is the type of female that you wish you have a herd of. Buy with confidence. Poll test pending.



8

lot 8

BLCC *Mr Crosby* 150G

◆ POLLED PUREBRED
◆ PG1328495

◆ BLCC 150G
◆ FEBRUARY 25, 2019

◆ BW: 98 LBS
◆ ACT WW: 830 LBS

MUIRHEAD LIVE WIRE 95R	KENCO/MF POWERLINE 204L
KOP CROSBY 137W	GFP MISS BEARCLAW 100M
KOP MS BENGIE 6P	R PLUS 2169M
	KOP MS FREIGHTLINER 34M
SPRINGCREEKWALLBANGER 11Z	HARVIE JDF WALLBANGER111X
BLCC MISS WALLBANGER 45B	SPRINGCREEK LINNE 72S
BLCC MISS RED 213U	LAZY S BLACK 823P
	BLCC MISS 214R

A powerful Crosby son that will be a tremendous herd sire. Very long bodied, great width of top, lots of muscle expression and comes from a great female. 150G will sire a calf crop that will be above average and his progeny will push the scales down hard every fall. 45B is a great tempered, excellent uddered female that comes from a great cow family. He will sire calves that will make your banker smile! Poll test pending.

CE	BW	WW	YW	MILK	MCE	MWWT
3.5	5.8	82.2	122.7	33.4	4.6	74.5



lot **9**

BLCC *Mr R Plus* **159G**

R PLUS 2151Z
R PLUS 6296D
 MISS R PLUS 3284A

KOP PONDEROSA 144Y
BLCC MISS PONDEROSA 380A
 BLCC MISS FIVE STAR 48T

PRL TOBACCO 201T
 SUN STAR MISS DRIVE
 GCF RESOLUTION U15
 MISS R PLUS 67X
 CMS TRADEMARK 756T
 KOP MS BENGIE 6P
 TNT FIVE STAR P275
 TNT MISS AMERICANA E55

CE	BW	WW	YW	MILK	MCE	MWWT
3.6	5.1	77.4	109.9	24.8	1.9	63.5

- ◆ POLLED PUREBRED
- ◆ PG1345552
- ◆ BLCC 159G
- ◆ FEBRUARY 25, 2019
- ◆ BW: 96 LBS
- ◆ ACT WW: 818 LBS

Long bodied beef bull that will have the ability to sire a tremendous calf crop and look good doing it. Excellent muscle expression, length of body and width of top, and comes from an eye appealing female that is a descendant of our E55 cow family. 159G is ready for heavy service. Poll test pending.



lot **10**

ADBS *Mr Crosby* **222G**

MUIRHEAD LIVE WIRE 95R
KOP CROSBY 137W
 KOP MS BENGIE 6P

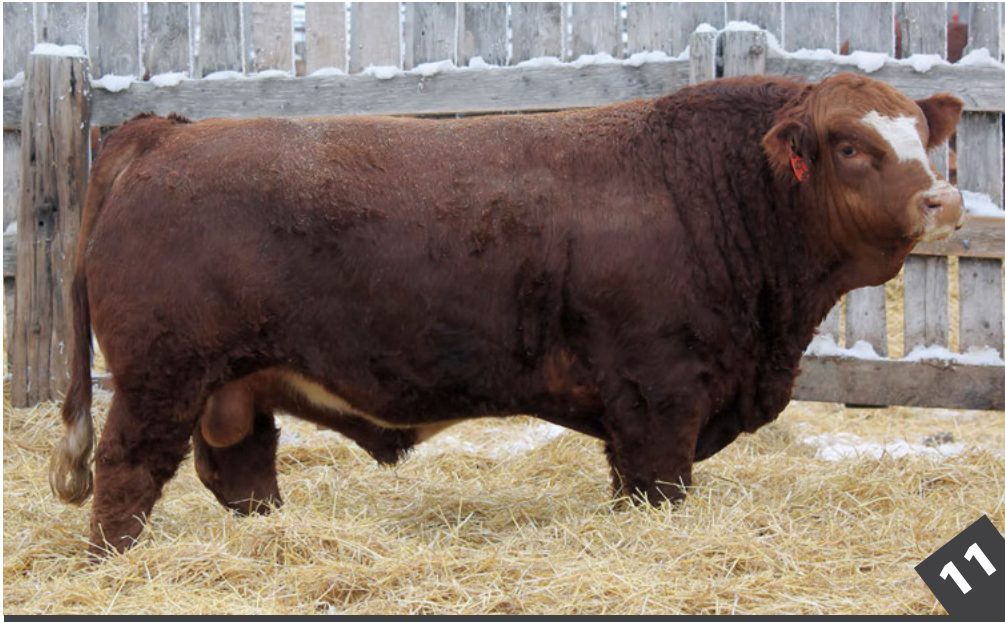
KWA RED ROCK 5T
ADBS MISS RED ROCK 111Y
 ADBS MISS TEDDY 152W

KENCO/MF POWERLINE 204L
 GFP MISS BEARCLAW 100M
 R PLUS 2169M
 KOP MS FREIGHTLINER 34M
 DAY RED PEPPER DOC 984R
 KWA MS ROCK 7P
 WHEATLAND RED TEDDY 457P
 ADBS MISS SANDY 105S

CE	BW	WW	YW	MILK	MCE	MWWT
5.9	4.5	79.9	118.1	34.2	7.9	74.2

- ◆ POLLED PUREBRED
- ◆ BPG1328539
- ◆ ADBS 222G
- ◆ MARCH 2, 2019
- ◆ BW: 96 LBS
- ◆ ACT WW: 796 LBS

A powerful son of Crosby that comes from a model female. 111Y has an excellent production record, always raising a top-quality calf every year. 222G has excellent rib shape and capacity, tremendous width of top, loads of depth and eye appeal, and will be a great sire of powerful progeny. All the boxes are checked with this bull, a full brother is working in the great herd of Mack Ranch, North Dakota. Poll test pending.



lot **11** BLCC *Mr Crosby* 234G

MUIRHEAD LIVE WIRE 95R KOP CROSBY 137W KOP MS BENGIE 6P	KENCO/MF POWERLINE 204L GFP MISS BEARCLAW 100M R PLUS 2169M KOP MS FREIGHTLINER 34M R PLUS REDGE 8018U MISS R PLUS 006K TNT STING M377 BLCC MISS 150R
R PLUS 110X BLCC MISS SLEDGE 321A BLCC MISS STING 343U	

CE	BW	WW	YW	MILK	MCE	MWWT
3.9	6.2	81.6	117.2	29.7	6.6	70.5

- ◆ POLLED PUREBRED
- ◆ PG1328547
- ◆ BLCC 234G
- ◆ MARCH 3, 2019
- ◆ BW: 96 LBS
- ◆ ACT WW: 800 LBS

This long bodied, blaze faced Crosby son will increase frame size and add pounds to increase your pay weight on his calves every fall. Great width of top, excellent capacity and maternally powerful. The dam is a hard-working female that has proven to produce for us. Poll test pending.

lot **12** BLCC *Mr Crosby* 242G

MUIRHEAD LIVE WIRE 95R KOP CROSBY 137W KOP MS BENGIE 6P	KENCO/MF POWERLINE 204L GFP MISS BEARCLAW 100M R PLUS 2169M KOP MS FREIGHTLINER 34M LFE ROCHFORD 3013T BLCC MISS ROCHFORD 220X BLCC MISS 38R
LFE MR LEWIS 514N LFE CALYNA 31M LRS RED REALITY 33J BLCC MISS 51N	

CE	BW	WW	YW	MILK	MCE	MWWT
4.9	5.5	82.9	122.4	28.4	6.0	69.9

- ◆ POLLED PUREBRED
- ◆ PG1328553
- ◆ BLCC 242G
- ◆ MARCH 4, 2019
- ◆ BW: 94 LBS
- ◆ ACT WW: 788 LBS

Typical of the Crosby progeny, 242G is long, deep, wide topped and will inject great performance into his offspring. His calves will weigh in and his daughters should be powerful. 220X is a model female, excellent feet and udder and has produced very well for us. This bull is ready for heavy service this spring. Poll test pending.





lot **13** BLCC *Mr R Plus* 250G

R PLUS 2151Z R PLUS 6296D MISS R PLUS 3284A	PRL TOBASCO 201T SUN STAR MISS DRIVE GCF RESOLUTION U15 MISS R PLUS 67X LBR CROCKET R81 SKORS MS CHOCOLATE 179S RCC/TCF LINE DRIVE M181 SUN RISE RED 5M
SKORS BLACK CROCKET 234Z BLCC MISS BCROCKETT 234B SUN RISE BLACK 96R	

CE	BW	WW	YW	MILK	MCE	MWWT
7.0	3.9	78.8	117.0	21.8	3.5	61.2

◆ POLLED PUREBRED ◆ BLCC 250G ◆ BW: 92 LBS
 ◆ PG1328557 ◆ MARCH 5, 2019 ◆ ACT WW: 770 LBS

A long bodied, blood red beef bull that will add extra performance, do-ability, thickness and eye appeal to his progeny and his females should be exceptional. 234B is a long bodied, big volume female that gets noticed by all who have seen her. This bull is ready for heavy service. Poll test pending.

lot **14** BLCC *Mr Standard* 295G

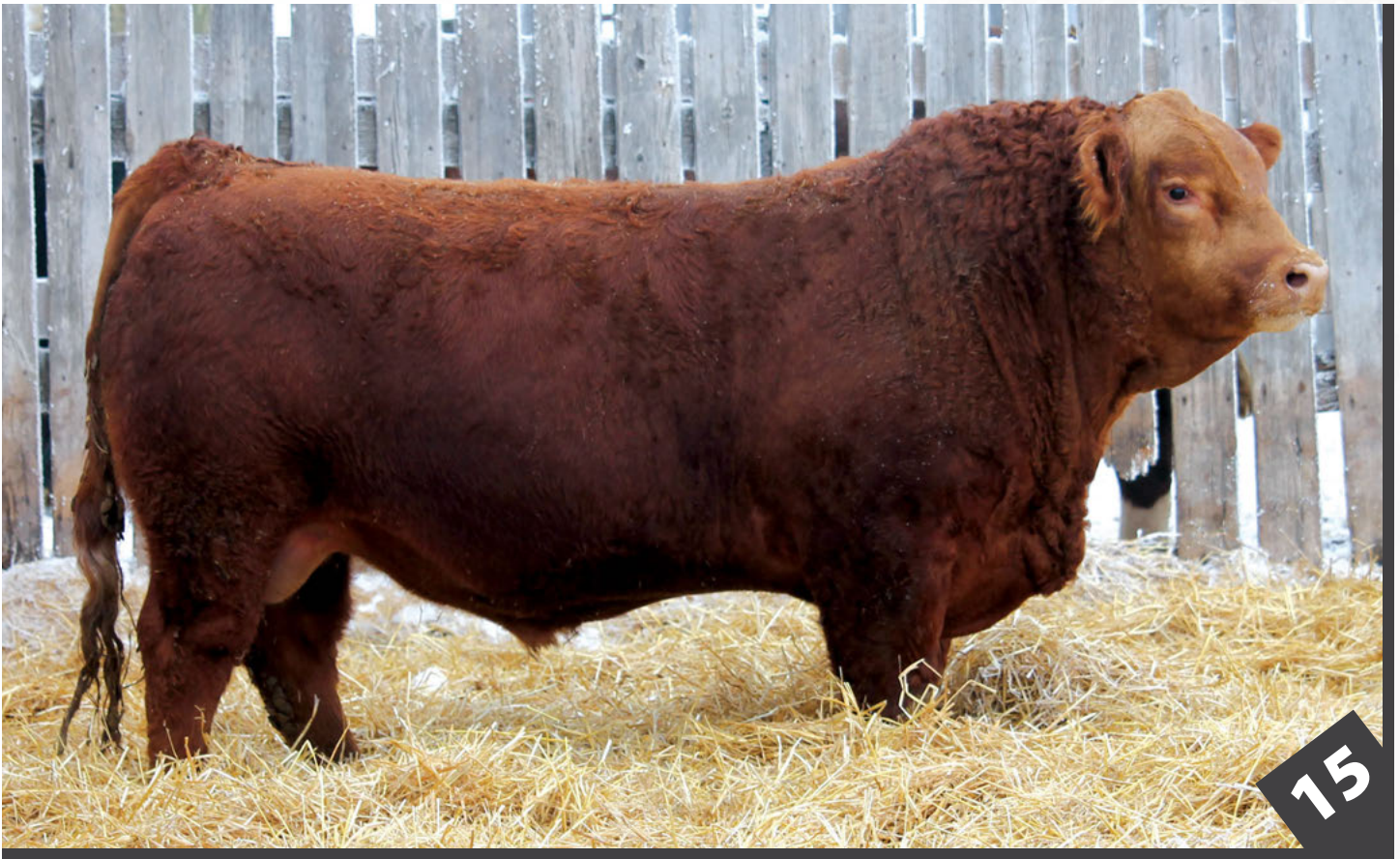
NUG ROYAL RED 324A MAF RED STANDARD 108C IPU 52N POCAHONTAS 215U	LFE BLACK LAKOTA 385W TRIPLE C SMARTY PANTS R TNT ACCELERATOR S226 IPU RED POCAHONTAS 52N LFE MR LEWIS 514N LFE CALYNA 31M NLC GOOD A NUFF 33G BLCC MISS 52P
LFE ROCHFORD 3013T BLCC MISS ROCHFORD 33A BLCC MISS GOODANUFF 16S	

CE	BW	WW	YW	MILK	MCE	MWWT
7.6	3.3	67.4	102.5	23.2	3.0	56.9

◆ POLLED PUREBRED ◆ BLCC 295G ◆ BW: 92 LBS
 ◆ PG1328846 ◆ MARCH 16, 2019 ◆ ACT WW: 755 LBS

Moderate, thick and beefy best describes this Red Standard son. 295G will add muscle, capacity, and do-ability to his offspring and look good doing it. 33A has been an exceptional producer for us, she is deep bodied, big capacity female that has been very consistent. Poll test pending.





lot **15**

BLCC *Mr Sheriff* 299G

◆ POLLED PUREBRED
◆ G1328851

◆ BLCC 299G
◆ MARCH 18, 2019

◆ BW: 86 LBS
◆ ACT WW: 740 LBS

KUNTZ MARSHALL 12Y
KUNTZ SHERIFF 8A
PEACOCK'S LI'L NETTIE 23Y

LFE BS LEWIS 322U
BLCC MISS STUBBY 152C
BLCC MISS ROCHFORT 108X

BMD RED WALKING TALL 13W
TIMBER WENDY 3W
MUIRHEAD'S KOSMO 27N
MUIRHEAD NETTIE 5W
R PLUS BLACKEDGE
LFE BS MS ARNOLD 135S
LFE ROCHFORT 3013T
BLCC MISS RED 277T

CE	BW	WW	YW	MILK	MCE	MWWT
12.3	1.1	73.9	112.4	27.5	4.1	64.5

A low birth weight Sheriff son that will calve like a dream and sire some very good progeny. 299G is a beef bull with excellent spring of rib and capacity, eye appeal, loads of muscle, and should sire some great females. The Sheriff daughters we have in production are looking great. Poll test pending.

lot **16**

BLCC *Mr Standard* 301G

◆ POLLED PUREBRED
◆ PG1328857

◆ BLCC 301G
◆ MARCH 19, 2019

◆ BW: 94 LBS
◆ ACT WW: 770 LBS

NUG ROYAL RED 324A
MAF RED STANDARD 108C
IPU 52N POCAHONTAS 215U

ANKONIAN RED CAESAR
BLCC MISS CAESAR 92U
BLCC MISS LABEL 205S

LFE BLACK LAKOTA 385W
TRIPLE C SMARTY PANTS R
TNT ACCELERATOR S226
IPU RED POCAHONTAS 52N
BOZ REDCOAT
GFI CANDACE G51
REMINGTON RED LABEL HR
BLCC MISS 34M

CE	BW	WW	YW	MILK	MCE	MWWT
5.6	3.8	70.0	101.3	24.8	3.2	59.8



◆ POLLED PUREBRED
◆ PG1328857

◆ BLCC 301G
◆ MARCH 19, 2019

◆ BW: 94 LBS
◆ ACT WW: 770 LBS

A long bodied Red Standard son that should sire performance, add some length and frame, and have some longevity bred into him. 92U continues to produce quite well into her golden years, and has raised some great quality calves. 301G will sire a very uniform calf crop, his steers will weigh up and his daughters will be producers. Poll test pending.



17

lot **17**

BLCC *Mr Crosby* **307G**

MUIRHEAD LIVE WIRE 95R
KOP Crosby 137W
 KOP MS BENGIE 6P

 KWA RED ROCK 5T
BLCC MISS RED ROCK 14A
 BLCC MISS FIVE STAR 55T

KENCO/MF POWERLINE 204L
 GFP MISS BEARCLAW 100M
 R PLUS 2169M
 KOP MS FREIGHTLINER 34M
 DAY RED PEPPER DOC 984R
 KWA MS ROCK 7P
 TNT FIVE STAR P275
 BLCC MISS 22N

◆ POLLED PUREBRED
 ◆ G1328862

◆ BLCC 307G
 ◆ MARCH 21, 2019

◆ BW: 94 LBS
 ◆ ACT WW: 770 LBS

A Crosby son with tremendous capacity, muscle expression, great width of top and loaded with eye appeal. 307G will inspect all these traits into his calf crop, and should prove to be an easy doing bull. The dam has been a great producing, heavy milking female that continues to raise top shelf progeny every year. Poll test pending.

CE	BW	WW	YW	MILK	MCE	MWWT
5.6	5.0	83.2	125.0	32.2	9.0	73.8



18

lot **18**

BLCC *Mr Sheriff* **310G**

◆ POLLED PUREBRED
◆ PG1328865

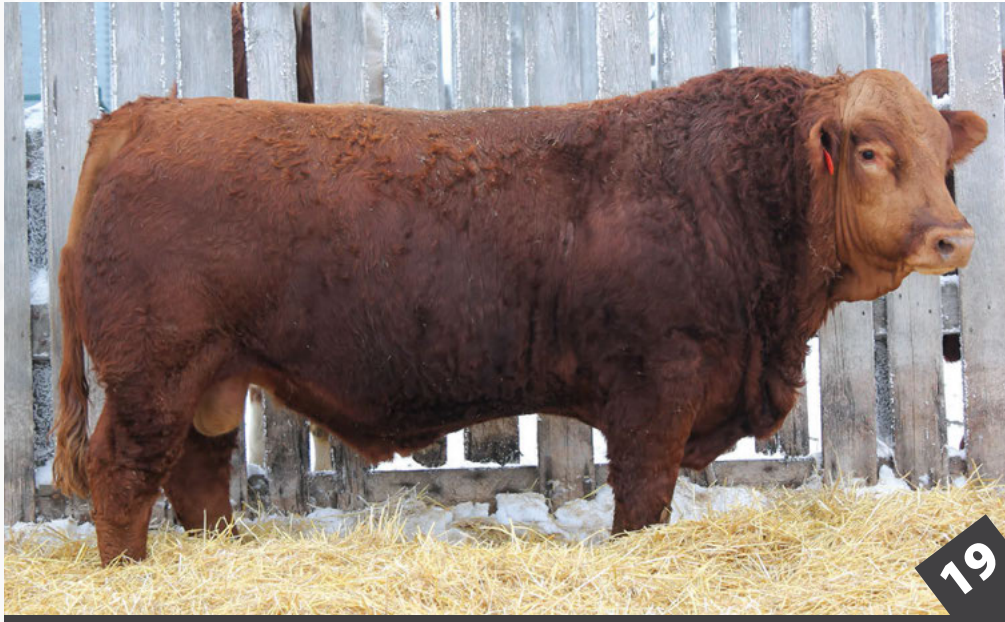
◆ BLCC 310G
◆ MARCH 23, 2019

◆ BW: 88 LBS
◆ ACT WW: 765 LBS

KUNTZ MARSHALL 12Y	BMD RED WALKING TALL 13W
KUNTZ SHERIFF 8A	TIMBER WENDY 3W
PEACOCK'S LI'L NETTIE 23Y	MUIRHEAD'S KOSMO 27N
	MUIRHEAD NETTIE 5W
	WHEATLAND BULL 131L
WHEATLAND RED TEDDY 457P	WHEATLAND LADY 902J
BLCC MISS TEDDY 26X	BLCC 124R
BLCC MISS 124R 183U	BLCC MISS 13R

One of the top two-year-old prospects in the group and one of the best Sheriff sons to date, 310G has stood out all summer and fall. One has to admire his powerful structure, moderate birth weight, width of top, muscle expression, eye appeal and sheer greatness. The dam is one of the biggest ribbed females we own, most times she has trouble getting down a chute! 310G has that same capacity and will be an excellent herd sire for whoever owns him! Buy with confidence! Poll test pending.

CE	BW	WW	YW	MILK	MCE	MWWT
9.5	1.0	70.0	106.9	30.9	4.3	65.9



lot **19** BLCC *Mr Crosby* 311G

MUIRHEAD LIVE WIRE 95R KOP CROSBY 137W KOP MS BENGIE 6P	KENCO/MF POWERLINE 204L GFP MISS BEARCLAW 100M R PLUS 2169M KOP MS FREIGHTLINER 34M RC STINGER 072K MISS ARNOLD J1062 REMINGTON RED LABEL HR BLCC MISS LUANNE 16L
TNT STING M377 BLCC MISS STING 267X BLCC MISS RED LABEL 248S	

CE	BW	WW	YW	MILK	MCE	MWWT
4.7	5.0	78.7	111.5	30.3	7.1	69.7

◆ POLLED PUREBRED ◆ BLCC 311G ◆ BW: 92 LBS
 ◆ PG1328866 ◆ MARCH 23, 2019 ◆ ACT WW: 760 LBS

Long bodied, wide topped, excellent tempered 2-year-old, that will prove to sire high gaining bulls or steers and attractive, productive, eye appealing daughters. 267X is a beautiful uddered female that has a great production record and knows how to raise them. These Crosby sons have proven time and time again to be great herd sires. Poll test pending.

lot **20** BLCC *Mr Sheriff* 312G

KUNTZ MARSHALL 12Y KUNTZ SHERIFF 8A PEACOCK'S LI'L NETTIE 23Y	BMD RED WALKING TALL 13W TIMBER WENDY 3W MUIRHEAD'S KOSMO 27N MUIRHEAD NETTIE 5W LFE MR LEWIS 514N LFE CALYNA 31M DOUBLE BAR D GENT 98N BLCC MISS 72N
LFE ROCHFORD 3013T BLCC MISS ROCHFORD 371X BLCC MISS GENT 381S	

CE	BW	WW	YW	MILK	MCE	MWWT
11.7	0.4	67.6	104.4	27.6	5.3	61.4

◆ POLLED PUREBRED ◆ BLCC 312G ◆ BW: 86 LBS
 ◆ PG1328867 ◆ MARCH 24, 2019 ◆ ACT WW: 745 LBS

A low birth weight, blaze faced Sheriff son that will prove to calve easily and add ease of fleshing, capacity and will add high maternal values to his daughters. Excellent capacity and eye appeal and has some fleckvieh influence. He will add the money stripe to a great group of calves. Poll test pending.





lot **21**

BLCC *Mr LTC* **328G**

IPU RED WESTERN 49X
BLCC MR WESTERN 276E
KWA MS ROCK 22Z

SILVER LAKE DEALER 60B
BLCC MISS SL DEALER 211E
WCC WELLS' WEDNESDAY 927W

WS BEEF MAKER R13
IPU 52N POCAHONTAS 215U
KWA RED ROCK 5T
LRX DELIGHT 2W
CHAMPS ROMANO
BLCC MISS STRIDE 57W
CEN RENEGADE 504R
SS SAFARA 13S FF

CE	BW	WW	YW	MILK	MCE	MWWT
6.0	4.7	76.1	113.4	34.7	3.8	72.8

- ◆ POLLED PUREBRED
- ◆ PG1328879
- ◆ BLCC 328G
- ◆ MARCH 29, 2019
- ◆ BW: 88 LBS
- ◆ ACT WW: 705 LBS

A long bodied, low birth weight, blaze faced bull that is half fleckvieh and will prove to sire some very good progeny. His dam goes back to a powerful female that we flushed successfully this past spring and has a great production record. Exceptional performance, maternally strong and ready to go to work.

lot **22**

BLCC *Mr Crosby* **331G**

MUIRHEAD LIVE WIRE 95R
KOP CROSBY 137W
KOP MS BENGIE 6P

LFE BS LEWIS 322U
BLCC MISS STUBBY 165C
LUCKY C RED SHOCKEM 95S

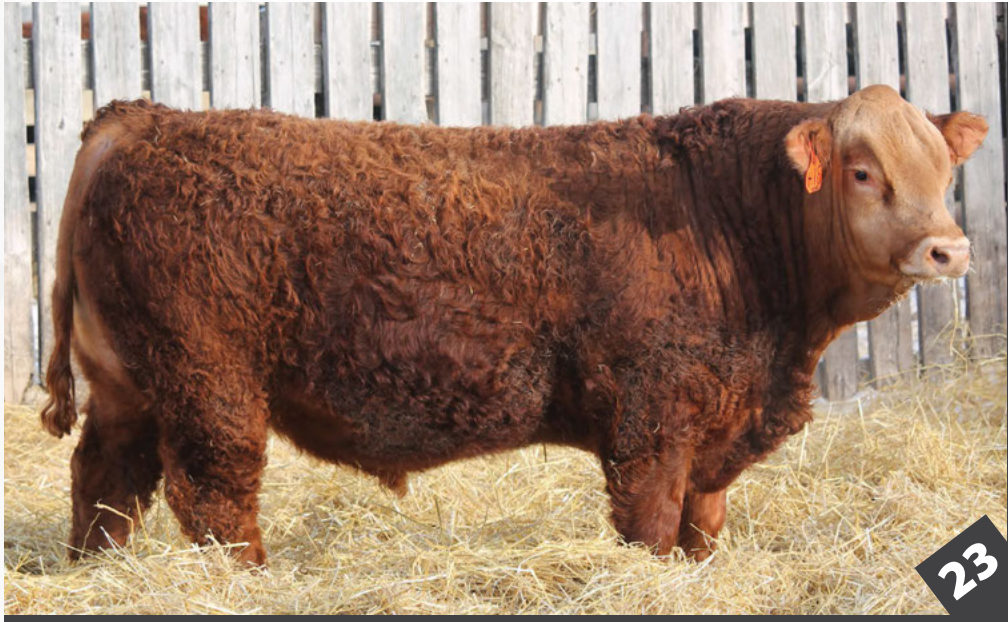
KENCO/MF POWERLINE 204L
GFP MISS BEARCLAW 100M
R PLUS 2169M
KOP MS FREIGHTLINER 34M
R PLUS BLACKEDGE
LFE BS MS ARNOLD 135S
LAZY S RED 236P
LUCKY "C" NEVADA 46N

CE	BW	WW	YW	MILK	MCE	MWWT
5.2	5.1	80.4	114.5	29.8	5.2	70.0

- ◆ POLLED PUREBRED
- ◆ G1328881
- ◆ BLCC 331G
- ◆ MARCH 30, 2019
- ◆ BW: 92 LBS
- ◆ ACT WW: 708 LBS

Typical of the Crosby progeny, 331G will add length, frame, capacity and uniformity to his calf crop. Excellent performance and great cow family backing him up. He will sire high performing progeny and his daughters will be impressive. Poll test pending.





lot **23**

BLCC *Mr Crosby* 31H

MUIRHEAD LIVE WIRE 95R
KOP CROSBY 137W
 KOP MS BENGIE 6P

R PLUS 110X
BLCC MISS SLEDGE 198A
 BLCC MISS RED ROCK 38W

KENCO/MF POWERLINE 204L
 GFP MISS BEARCLAW 100M
 R PLUS 2169M
 KOP MS FREIGHTLINER 34M
 R PLUS REDGE 8018U
 MISS R PLUS 006K
 KWA RED ROCK 5T
 BLCC MISS GOODANUFF 16S

CE	BW	WW	YW	MILK	MCE	MWWT
4.8	5.7	82.5	120.4	30.8	7.3	72.1

- ◆ POLLED PUREBRED
- ◆ PG1337724
- ◆ BLCC 31H
- ◆ FEBRUARY 2, 2020
- ◆ BW: 96 LBS
- ◆ ACT WW: 840 LBS

A long bodied, wide topped Crosby son that will make you take a second look. Excellent width of top, super muscle expression, great temperament and loads of eye appeal. His dam has been an excellent producer for us and continues to raise the bar every year. 31H will mature to be a tremendous herd sire. Poll test pending.

lot **24**

BLCC *Mr Standard* 36H

NUG ROYAL RED 324A
MAF RED STANDARD 108C
 IPU 52N POCAHONTAS 215U

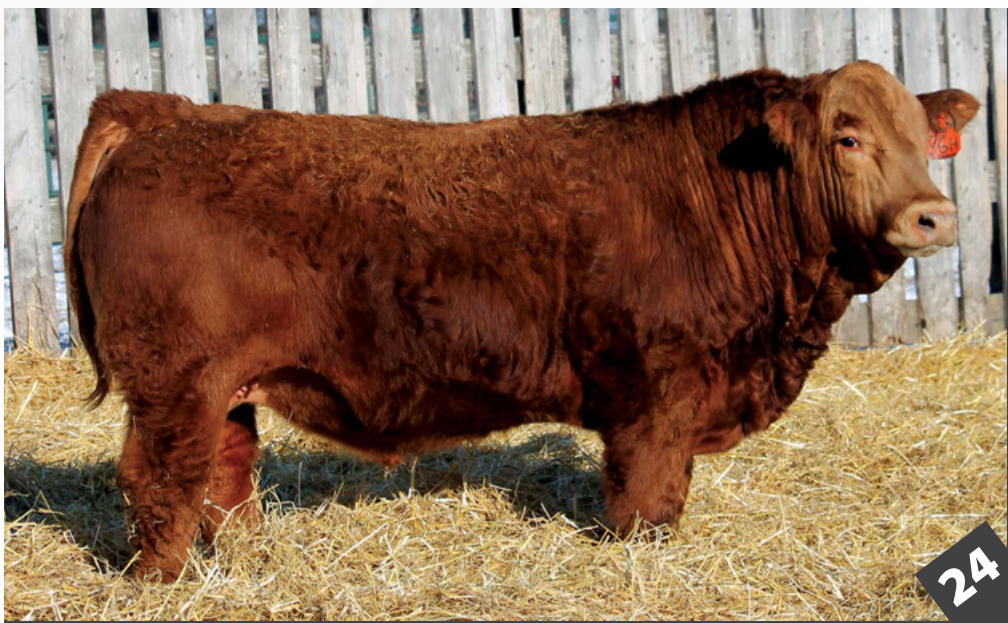
WHEATLAND RED ACE 747T
BLCC MISS ACE 100X
 BLCC MISS LABEL 29U

LFE BLACK LAKOTA 385W
 TRIPLE C SMARTY PANTS R
 TNT ACCELERATOR S226
 IPU RED POCAHONTAS 52N
 TNT TOP GUN R244
 WHEATLAND LADY 902J
 REMINGTON RED LABEL HR
 SIMMENTAL/CROSSBRED

CE	BW	WW	YW	MILK	MCE	MWWT
7.0	3.2	67.9	97.5	19.8	1.6	53.8

- ◆ POLLED PERCENTAGE
- ◆ PRS1342275
- ◆ BLCC 36H
- ◆ FEBRUARY 2, 2020
- ◆ BW: 94 LBS
- ◆ ACT WW: 848 LBS

A Red Standard son that is long bodied, big framed and comes from a great dam. 36H should add some frame and length to his calf crop and will sire some great steers and his females should be spectacular. 100X is a heavy milking cow that always brings in a top calf every fall. Poll test pending.





lot **25**

BLCC *Mr Crosby* 44H

MUIRHEAD LIVE WIRE 95R
KOP CROSBY 137W
 KOP MS BENGIE 6P

KOP PONDEROSA 144Y
BLCC MISS PONDEROSA 55C
 BLCC MISS ROCHFORT 106Y

KENCO/MF POWERLINE 204L
 GFP MISS BEARCLAW 100M
 R PLUS 2169M
 KOP MS FREIGHTLINER 34M
 CMS TRADEMARK 756T
 KOP MS BENGIE 6P
 LFE ROCHFORT 3013T
 BLCC MISS GOODANUFF 3S

CE	BW	WW	YW	MILK	MCE	MWWT
2.5	6.2	82.5	119.9	34.7	5.0	76.0

- ◆ POLLED PUREBRED
- ◆ PG1342279
- ◆ BLCC 44H
- ◆ FEBRUARY 4, 2020
- ◆ BW: 96 LBS
- ◆ ACT WW: 860 LBS

You've just got to love the way these Crosby sired bulls develop. Real beef bulls for beef producer. 44H has everything a great herd bull requires, length, wide top, performance, muscle expression, eye appeal and mothered by a great dam. This bull checks all the boxes and will mature to be a tremendous herd sire. Poll test pending.

lot **26**

BLCC *Mr Crosby* 45H

MUIRHEAD LIVE WIRE 95R
KOP CROSBY 137W
 KOP MS BENGIE 6P

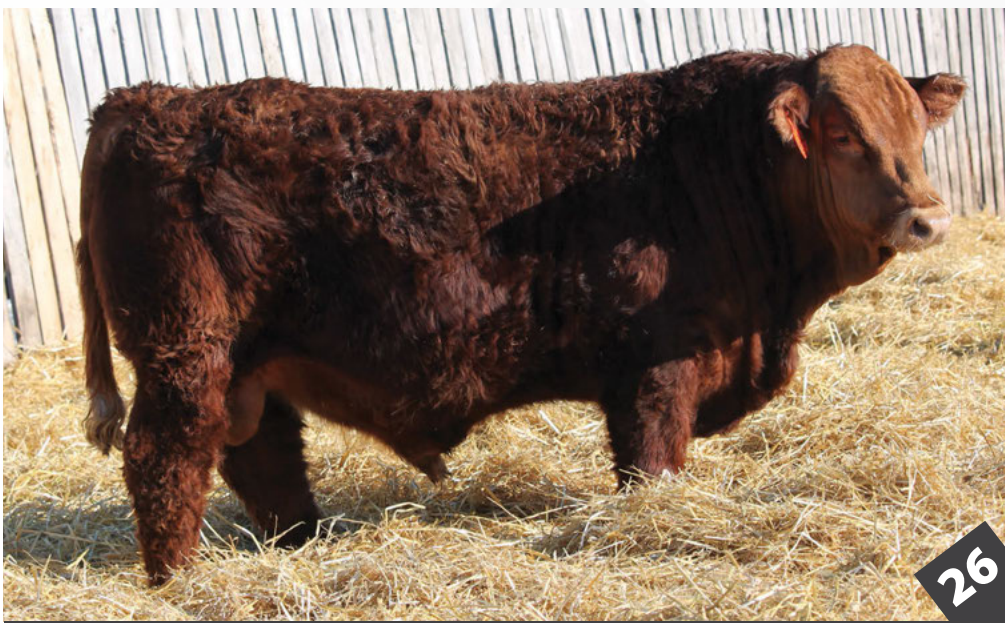
VIRGINIA'S PORSCHE 64P
BLCC MISS PORSCHE 66Y
 IPU 4G MS KLYBER 54L

KENCO/MF POWERLINE 204L
 GFP MISS BEARCLAW 100M
 R PLUS 2169M
 KOP MS FREIGHTLINER 34M
 CANADIAN NEFF
 ANCHOR "T" BARBI 46K
 KLYBER
 DORA LEE FRANCESCA

CE	BW	WW	YW	MILK	MCE	MWWT
2.1	6.1	74.6	104.4	35.6	2.1	72.9

- ◆ POLLED PUREBRED
- ◆ PG1342280
- ◆ BLCC 45H
- ◆ FEBRUARY 4, 2020
- ◆ BW: 96 LBS
- ◆ ACT WW: 845 LBS

Solid red, polled and half fleckvieh, 45H has commanded much attention all fall and winter. Wide, long and deep, he will sire calves that will weigh up great every fall. The dam traces back to a very influential female that was in our transplant program and has produced very well. 45H's sons will be great and his daughters fantastic. Poll test pending.





R Plus 5015C

lot **27**

BLCC *Mr 5015C* 47H

WFL ABSOLUTE 51Y
R PLUS 5015C
 IPU MS. 56U LINER 15A
 LAZY S BLACK 823P
BLCC MISS RED 213U
 BLCC MISS 214R

LFE STRAIT UP 454W
 WFL MS BLACK FLASH 8068U
 SPRINGCREEK LINER 56U
 RTC/JETS UPTOWN GIRL 15U
 LAZY S BLACK STETSON 129L
 MS LAZY S RED P 719K
 MEYERS RED TOP
 HF/GFI RUBY RED 33E

CE	BW	WW	YW	MILK	MCE	MWWT
7.7	2.6	76.7	118.9	24.0	3.0	62.4

- ◆ POLLED PUREBRED
- ◆ PG1342282
- ◆ BLCC 47H
- ◆ FEBRUARY 4, 2020
- ◆ BW: 90 LBS
- ◆ ACT WW: 820 LBS

A very long bodied 5015C son that has a moderate birth weight and great performance. 47H has the extra length and frame to boost those weaning weights every fall. The dam to this bull is the grand dam to the black Sheriff son we are using here. Generations of productive, trouble free females. Not much guesswork on this bull. Poll test pending.



28

lot **28**

BLCC *Mr Dealer* 56H

HARVIE JDF WALLBANGER111X
ERIXON DEALER 63Z
 ERIXON LADY 35T
 LFE ROCHFORD 3013T
BLCC MISS ROCHFORD 258Y
 BLCC MISS STING 343U

SHS ENTICER P1B
 JDF PEPSI 61U
 CNS DREAM ON L186
 TSC GLITTER
 LFE MR LEWIS 514N
 LFE CALYNA 31M
 TNT STING M377
 BLCC MISS 150R

CE	BW	WW	YW	MILK	MCE	MWWT
6.7	4.6	85.2	131.2	23.3	2.9	63.9

- ◆ POLLED PUREBRED
- ◆ PG1342289
- ◆ BLCC 56H
- ◆ FEBRUARY 5, 2020
- ◆ BW: 90 LBS
- ◆ ACT WW: 835 LBS

You just have to appreciate the depth and capacity that Dealer injects into all of his progeny and 56H is no exception. A bull that is very easy doing, full of depth, volume and is mothered by a great female, going back to our D92 cow family. Lots of predictability in this red bull. Poll test pending.



29

lot **29**

BLCC *Mr Crosby* 59H

MUIRHEAD LIVE WIRE 95R
KOP CROSBY 137W
 KOP MS BENGIE 6P
 KWA RED ROCK 5T
BLCC MISS RED ROCK 310Y
 BLCC MISS TEDDY 13U

KENCO/MF POWERLINE 204L
 GFP MISS BEARCLAW 100M
 R PLUS 2169M
 KOP MS FREIGHTLINER 34M
 DAY RED PEPPER DOC 984R
 KWA MS ROCK 7P
 WHEATLAND RED TEDDY 457P
 BLCC MISS RED LABEL 248S

CE	BW	WW	YW	MILK	MCE	MWWT
5.8	4.5	77.8	114.6	31.3	8.2	70.2

- ◆ POLLED PUREBRED
- ◆ PG1342290
- ◆ BLCC 59H
- ◆ FEBRUARY 5, 2020
- ◆ BW: 92 LBS
- ◆ ACT WW: 840 LBS

Long bodied, thick made, excellent performance and eye appeal best describe this Crosby son. 59H is full of muscle, capacity and eye appeal and comes from a very hard-working Red Rock dam, that is consistent year after year. Great haircoat, temperament and ready to go to work. Poll test pending.

lot **30****BLCC** *Mr Crosby* 76H

MUIRHEAD LIVE WIRE 95R
KOP CROSBY 137W
 KOP MS BENGIE 6P

KWA RED ROCK 5T
BLCC MISS RED ROCK 37Z
 BLCC MISS ROCHFORT 371X

KENCO/MF POWERLINE 204L
 GFP MISS BEARCLAW 100M
 R PLUS 2169M
 KOP MS FREIGHTLINER 34M
 DAY RED PEPPER DOC 984R
 KWA MS ROCK 7P
 LFE ROCHFORT 3013T
 BLCC MISS GENT 381S

CE	BW	WW	YW	MILK	MCE	MWWT
5.4	4.5	77.9	115.7	31.6	7.4	70.6

- ◆ POLLED PUREBRED ◆ BLCC 76H ◆ BW: 94 LBS
 ◆ PG1342305 ◆ FEBRUARY 7, 2020 ◆ ACT WW: 845 LBS

A Crosby son from the 37Z Red Rock female that has performed very well and will mature to be an impressive and very predictable herd sire. His dam is very deep bodied, excellent uddered and always gets noticed. 76H is long bodied, has loads of capacity and style, and will sire progeny that will be impressive. Poll test pending.

lot **31****BLCC** *Mr Crosby* 106H

MUIRHEAD LIVE WIRE 95R
KOP CROSBY 137W
 KOP MS BENGIE 6P

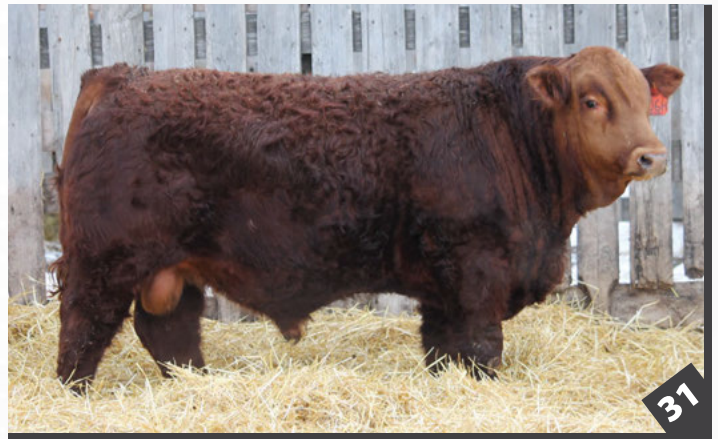
R PLUS 110X
BLCC MISS SLEDGE 165A
 BLCC MISS TEDDY 229U

KENCO/MF POWERLINE 204L
 GFP MISS BEARCLAW 100M
 R PLUS 2169M
 KOP MS FREIGHTLINER 34M
 R PLUS REDGE 8018U
 MISS R PLUS 006K
 WHEATLAND RED TEDDY 457P
 BLCC MISS STING 38S

CE	BW	WW	YW	MILK	MCE	MWWT
4.0	5.9	78.1	112.6	29.8	6.9	68.9

- ◆ POLLED PUREBRED ◆ BLCC 106H ◆ BW: 96 LBS
 ◆ PG1342328 ◆ FEBRUARY 10, 2020 ◆ ACT WW: 790 LBS

Crosby and 165A combined to produce yet another quality individual. 106H will mature to be a tremendous beef bull. Exceptional performance, great length of body and width of top, and mothered by a great female. 165A is excellent uddered and has a great production record. Poll test pending.

lot **32****BLCC** *Mr Crosby* 109H

MUIRHEAD LIVE WIRE 95R
KOP CROSBY 137W
 KOP MS BENGIE 6P

ERIXON DEALER 63Z
BLCC MISS DEALER 213B
 BLCC MISS RED ROCK 33Y

KENCO/MF POWERLINE 204L
 GFP MISS BEARCLAW 100M
 R PLUS 2169M
 KOP MS FREIGHTLINER 34M
 HARVIE JDF WALLBANGER111X
 ERIXON LADY 35T
 KWA RED ROCK 5T
 BLCC MISS TOP GUN 122W

CE	BW	WW	YW	MILK	MCE	MWWT
5.0	5.5	85.7	128.0	31.2	6.3	74.1

- ◆ POLLED PUREBRED ◆ BLCC 109H ◆ BW: 94 LBS
 ◆ PG1342330 ◆ FEBRUARY 11, 2020 ◆ ACT WW: 810 LBS

This Crosby son has that extra length and the extra performance to bring you those heavy weight steers in the fall. Excellent muscle expression, great depth of quarter and super eye appeal will let 109H make a significant contribution to your calf crop. 213B is an excellent uddered female that milks very well. Poll test pending.





33

lot **33**

BLCC *Mr Kill Switch* 117H

◆ POLLED PUREBRED
◆ PG1342336

◆ BLCC 117H
◆ FEBRUARY 11, 2020

◆ BW: 90 LBS
◆ ACT WW: 803 LBS

WHEATLAND CIRCUIT BREAKER	WHEATLAND HIGHVOLTAGE 122Y
WHEATLAND KILL SWITCH	WHEATLAND LADY 81X
HR/RR MS CANDACE T73	REMINGTON RED LABEL HR
	GFI CANDACE G51
KWA RED ROCK 5T	DAY RED PEPPER DOC 984R
BLCC MISS RED ROCK 34Y	KWA MS ROCK 7P
BLCC MISS TEDDY 15W	WHEATLAND RED TEDDY 457P
	BLCC MISS BRAVADO 5T

A standout son of Kill Switch in the bull pen all fall and winter. You just can't help but not notice him for his type, tremendous thickness, capacity, depth of quarter, hair coat and excellent temperament, and is mothered by a tremendous female. 34Y is perhaps the deepest bodied cow on the farm, and continues to raise the bar year after year. 117H has the makings to be a true herd builder. Poll test pending.

CE	BW	WW	YW	MILK	MCE	MWWT
10.4	2.8	78.8	114.3	29.2	8.7	68.6

lot **34****BLCC** *Mr Dealer* 128H

HARVIE JDF WALLBANGER111X
ERIXON DEALER 63Z
 ERIXON LADY 35T

TWIN-CHIEF WALKER 21W
KOP MS WALKER 142A
 KOP MS BENGIE 6P

SHS ENTICER P1B
 JDF PEPSI 61U
 CNS DREAM ON L186
 TSC GLITTER
 WFL COMMANDER 78R
 TWIN-CHIEF RASPBERRY 102R
 R PLUS 2169M
 KOP MS FREIGHTLINER 34M

CE	BW	WW	YW	MILK	MCE	MWWT
4.8	5.8	83.0	125.3	27.1	2.2	68.6

- ◆ POLLED PUREBRED
- ◆ PG1342344
- ◆ BLCC 128H
- ◆ FEBRUARY 13, 2020
- ◆ BW: 92 LBS
- ◆ ACT WW: 790 LBS

A dark red Dealer son that has the depth and rib shape of his sire. 128H is full of capacity, muscle and has an excellent temperament. The dam is a powerful female that was one of our top picks at the KOPP dispersal. 142A is a daughter of the legendary 6P, the dam of Crosby. 128H will influence any program in his ability to sire predictable offspring. Poll test pending.

lot **35****BLCC** *Mr Kill Switch* 131H

WHEATLAND CIRCUIT BREAKER
WHEATLAND KILL SWITCH
 HR/RR MS CANDACE T73

KWA RED ROCK 5T
BLCC MISS ROCK 273Y
 BLCC MISS RED 284T

WHEATLAND HIGHVOLTAGE122Y
 WHEATLAND LADY 81X
 REMINGTON RED LABEL HR
 GFI CANDACE G51
 DAY RED PEPPER DOC 984R
 KWA MS ROCK 7P
 LAZY S BLACK 823P
 BLCC MISS LITA 94L

CE	BW	WW	YW	MILK	MCE	MWWT
9.1	3.4	80.8	117.9	29.3	6.6	69.7

- ◆ POLLED PUREBRED
- ◆ PENDING
- ◆ BLCC 131G
- ◆ FEBRUARY 13, 2020
- ◆ BW: 92 LBS
- ◆ ACT WW: 700 LBS

A long-bodied Kill Switch son that has length, thickness, great depth of quarter and a tremendous hair coat. Exceptional performance and maternally strong. 273Y is a big volume female that has several high selling bulls to her credit and has a powerful daughter in herd. She was flushed very successfully this past spring, and we have been pleased with all her progeny. Poll test pending.

lot **36****BLCC** *Mr Liner* 138H

SPRINGCREEK LINER 56U
JPCC MR LINER 75B
 DRAKE TULA 1R

LFE BS LEWIS 322U
BLCC MISS STUBBY 146B
 BLCC MISS BRAVADO 66U

RCC/TCF LINE DRIVE M181
 NEVAS L93
 TCF/RCC TEMPTATION GJ640
 DCC 5N
 R PLUS BLACKEDGE
 LFE BS MS ARNOLD 135S
 KS BRAVADO P68
 BLCC MISS 38N

CE	BW	WW	YW	MILK	MCE	MWWT
6.1	3.5	73.5	109.9	26.5	2.1	63.3

- ◆ POLLED PUREBRED
- ◆ PG1342433
- ◆ BLCC 138H
- ◆ FEBRUARY 14, 2020
- ◆ BW: 90 LBS
- ◆ ACT WW: 780 LBS

This moderate framed Liner son is deep bodied and loaded with thickness and capacity. 138H has a moderate birth weight, great performance, and excellent eye appeal. He will sire a great group of progeny and his daughters should be spectacular. The predictability of the Liner daughters have really impressed us so far. 146B is a deep bodied, low maintenance female. Poll test pending.





lot **37** BLCC *Mr Standard* 139H

NUG ROYAL RED 324A
MAF RED STANDARD 108C
 IPU 52N POCAHONTAS 215U

LFE ROCHFORD 3013T
BLCC MISS ROCHFORD 33A
 BLCC MISS GOODANUFF 16S

LFE BLACK LAKOTA 385W
 TRIPLE C SMARTY PANTS R
 TNT ACCELERATOR S226
 IPU RED POCAHONTAS 52N
 LFE MR LEWIS 514N
 LFE CALYNA 31M
 NLC GOOD A NUFF 33G
 BLCC MISS 52P

CE	BW	WW	YW	MILK	MCE	MWWT
7.4	3.4	67.8	103.0	23.2	2.9	57.1

- ◆ POLLED PUREBRED
- ◆ PG1342435
- ◆ BLCC 139H
- ◆ FEBRUARY 14, 2020
- ◆ BW: 92 LBS
- ◆ ACT WW: 770 LBS

A solid red son of Red Standard with the added depth and capacity that his sire passes on to all his progeny. 139H is built like a tank, has exceptional performance, is great tempered and comes from a hard-working female. 33A is a great uddered female that has a stellar production record and is a low maintenance female. Poll test pending.

lot **38** BLCC *Mr Crosby* 151H

MUIRHEAD LIVE WIRE 95R
KOP CROSBY 137W
 KOP MS BENGIE 6P

KWA RED ROCK 5T
BLCC MISS RED ROCK 117D
 BLCC MISS RED 284T

KENCO/MF POWERLINE 204L
 GFP MISS BEARCLAW 100M
 R PLUS 2169M
 KOP MS FREIGHTLINER 34M
 DAY RED PEPPER DOC 984R
 KWA MS ROCK 7P
 LAZY S BLACK 823P
 BLCC MISS LITA 94L

CE	BW	WW	YW	MILK	MCE	MWWT
5.7	4.6	81.2	119.9	33.7	7.4	74.3

- ◆ POLLED PUREBRED
- ◆ PG1342443
- ◆ BLCC 151H
- ◆ FEBRUARY 16, 2020
- ◆ BW: 90 LBS
- ◆ ACT WW: 790 LBS

Typical of the Crosby sired progeny, 151H is long, wide topped, deep bodied, excellent performance and has a great haircoat. The dam is a hard-working young female that is from a great cow family. 284T is still in production and has many daughters in herd. 151H will make a predictable and profitable herd sire. Poll test pending.





lot **39** BLCC *Mr Revenue* 162H

PROFIT
WHEATLAND REVENUE 677D
 WHEATLAND LADY 935W

JPCC MR LINER 75B
BLCC MISS LINER 13E
 BLCC MISS STUBBY 249A

WS PILGRIM H182U
 WAGR PANARAMA 204Z
 WHEATLAND BULL 680S
 WHEATLAND LADY 727 T
 SPRINGCREEK LINER 56U
 DRAKE TULA 1R
 LFE BS LEWIS 322U
 BLCC MISS 8N

CE	BW	WW	YW	MILK	MCE	MWWT
4.7	4.8	77.6	113.9	24.8	2.3	63.6

- ◆ POLLED PUREBRED
- ◆ BLCC 162H
- ◆ BW: 94 LBS
- ◆ PG1342449
- ◆ FEBRUARY 17, 2020
- ◆ ACT WW: 820 LBS

A standout Revenue son that puts everything together in a very attractive package. Great length, tremendous capacity, excellent performance and comes from a beautiful young female, that has certainly out done herself on this great prospect. She is fast tracking her way into being a standout producer. 162H has the added extra spring of rib and dimension that should make him a breed improver. Poll test pending.

lot **40** BLCC *Mr B Sheriff* 165H

KUNTZ SHERIFF 8A
BLCC MR SHERIFF 327E
 BLCC MISS CROCKETT 295C

ERIXON DEALER 63Z
BLCC MISS DEALER 131F
 WINDMILL MS BEEF 137U

KUNTZ MARSHALL 12Y
 PEACOCK'S LI'L NETTIE 23Y
 SKORS BLACK CROCKET 234Z
 BLCC MISS RED 213U
 HARVIE JDF WALLBANGER111X
 ERIXON LADY 35T
 IPU 414K MR BEEF 12R
 WINDMILL DOMINO 47R

CE	BW	WW	YW	MILK	MCE	MWWT
9.1	2.3	75.5	113.4	28.1	4.5	65.9

- ◆ POLLED PUREBRED
- ◆ BLCC 165H
- ◆ BW: 80 LBS
- ◆ PG1342451
- ◆ FEBRUARY 18, 2020
- ◆ ACT WW: 735 LBS

A low birth weight, non-diluter, calving ease prospect that will calve heifers like a dream! 165A started small, but still has great thickness and exceptional width of top and would be a great choice to throw into the heifer pen. 131F is a beautifully made young female that we are liking the looks of. Poll test pending.





lot **41** **BLCC** *Mr Kill Switch* 176H

WHEATLAND CIRCUIT BREAKER
WHEATLAND KILL SWITCH
 HR/RR MS CANDACE T73

KWA RED ROCK 5T
BLCC MISS ROCK 273Y
 BLCC MISS RED 284T

WHEATLAND HIGHVOLTAGE122Y
 WHEATLAND LADY 81X
 REMINGTON RED LABEL HR
 GFI CANDACE G51
 DAY RED PEPPER DOC 984R
 KWA MS ROCK 7P
 LAZY S BLACK 823P
 BLCC MISS LITA 94L

CE	BW	WW	YW	MILK	MCE	MWWT
9.1	3.4	80.8	117.9	29.3	6.6	69.7

- ◆ POLLED PUREBRED
- ◆ PENDING
- ◆ BLCC 176H
- ◆ FEBRUARY 19, 2020
- ◆ BW: 96 LBS
- ◆ ACT WW: 830 LBS

A Kill Switch son that has the length, thickness and scale to add pounds to your calf crop. We have been very pleased with this sire group; they calve easily then grow quickly. 176H has plenty of style, performance and comes from our great Red Rock flush cow and is ready to go to work. Poll test pending.



lot **42** **ADBS** *Mr Liner* 183H

SPRINGCREEK LINER 56U
JPCC MR LINER 75B
 DRAKE TULA 1R

WHEATLAND RED TEDDY 457P
ADBS MISS TEDDY 332U
 ADBS MISS ROXY 251R

RCC/TCF LINE DRIVE M181
 NEVAS L93
 TCF/RCC TEMPTATION GJ640
 DCC 5N
 WHEATLAND BULL 131L
 WHEATLAND LADY 902J
 LAZY S RED PIONEER 235L
 BLCC MISS KORI 128K

CE	BW	WW	YW	MILK	MCE	MWWT
5.2	3.6	67.6	103.4	30.3	3.9	64.1

- ◆ POLLED PUREBRED
- ◆ PG1342462
- ◆ ADBS 183H
- ◆ FEBRUARY 20, 2020
- ◆ BW: 94 LBS
- ◆ ACT WW: 845 LBS

Another thick made Liner son that will sire great performance and strong maternal into all his offspring. Excellent performance, eye appeal, hair coat, combined with a power dam makes no guesswork on this bull. 332U is getting up in age but still has an udder like a three-year-old. Poll test pending.



lot **43** **BLCC** *Mr Finest* 188H

MRL RED WHISKEY 101B
PWK GIBSONS FINEST 6Y 52E
 PWK MS PAULA 39W 6Y

R PLUS 110X
BLCC MISS SLEDGE 123D
 BLCC MISS STING 301S

TNT BOOTLEGGER Z268
 MRL MISS 677Y
 SUNNY VALLEY WISE GUY 80W
 PWK MS PAULA 122P 39W
 R PLUS REDGE 8018U
 MISS R PLUS 006K
 TNT STING M377
 BLCC MISS 128N

CE	BW	WW	YW	MILK	MCE	MWWT
8.4	4.9	85.5	123.1	28.1	8.7	70.9

- ◆ POLLED PUREBRED
- ◆ PG1345554
- ◆ BLCC 188H
- ◆ FEBRUARY 21, 2020
- ◆ BW: 94 LBS
- ◆ ACT WW: 785 LBS

An attractive Gibsons Finest son that is long bodied, deep sided and maternally solid. 188H is the type of bull that would work great in a cross-breeding program and would sire a phenomenal set of steers. Lots of longevity bred into this bull. 301S is still in production and has weaned an impressive heifer for us last fall.



lot **44** BLCC *Mr Standard* 213H

NUG ROYAL RED 324A MAF RED STANDARD 108C IPU 52N POCAHONTAS 215U	LFE BLACK LAKOTA 385W TRIPLE C SMARTY PANTS R TNT ACCELERATOR S226 IPU RED POCAHONTAS 52N R PLUS REDGE 8018U MISS R PLUS 006K WHEATLAND RED TEDDY 457P BLCC MISS STING 14T
R PLUS 110X BLCC MISS SLEDGE 277B BLCC MISS TEDDY 14W	

CE	BW	WW	YW	MILK	MCE	MWWT
6.5	4.4	71.8	105.6	22.1	3.0	58.0

- ◆ POLLED PUREBRED
- ◆ PG1342498
- ◆ BLCC 213H
- ◆ FEBRUARY 25, 2020
- ◆ BW: 94 LBS
- ◆ ACT WW: 770 LBS

Moderate and stout best describe this prospect. Red Standard continues to work very well for us, siring many great progeny every year. 213H comes from a beautiful female that has an impeccable udder and we are more than pleased with her efforts every year. We are calving a full sister to this bull this winter and she is spectacular. Poll test pending.

lot **45** BLCC *Mr Crosby* 217H

MUIRHEAD LIVE WIRE 95R KOP CROSBY 137W KOP MS BENGIE 6P	KENCO/MF POWERLINE 204L GFP MISS BEARCLAW 100M R PLUS 2169M KOP MS FREIGHTLINER 34M WHEATLAND BULL 131L WHEATLAND LADY 902J TNT STING M377 BLCC MISS 2P
WHEATLAND RED TEDDY 457P BLCC MISS TEDDY 229U BLCC MISS STING 38S	

CE	BW	WW	YW	MILK	MCE	MWWT
4.0	5.0	75.3	108.6	27.0	6.6	64.7

- ◆ POLLED PUREBRED
- ◆ PG1342503
- ◆ BLCC 217H
- ◆ FEBRUARY 26, 2020
- ◆ BW: 94 LBS
- ◆ ACT WW: 767 LBS

Another Crosby son loaded with style and performance. 217H has had that herd bull look all along. Long, thick, deep and should be a predictable herd sire. The dam is an easy keeping female that continues to get the job done. Love the consistency in these Crosby sons. Poll test pending.





lot **46**

BLCC *Mr Dealer* 275H

HARVIE JDF WALLBANGER111X
ERIXON DEALER 63Z
 ERIXON LADY 35T

R PLUS 110X
BLCC MISS SLEDGE 187Z
 BLCC MISS BLACK POWER198W

SHS ENTICER P1B
 JDF PEPSI 61U
 CNS DREAM ON L186
 TSC GLITTER

R PLUS REDGE 8018U
 MISS R PLUS 006K
 KENCO/MF POWERLINE 204L
 TNT MISS AMERICANA E55

CE	BW	WW	YW	MILK	MCE	MWWT
6.5	5.2	82.1	124.0	22.8	3.5	63.9

- ◆ POLLED PUREBRED
- ◆ PG1342943
- ◆ BLCC 275H
- ◆ MARCH 12, 2020
- ◆ BW: 94 LBS
- ◆ ACT WW: 738 LBS

A non-dilutor, red baldy Dealer son that has the depth, capacity and muscle expression that his sire is known for. 275H will be and will sire ease of fleshing, low maintenance progeny that will have the ability to positively impact your bottom-line year after year. Dam is an eye appealing granddaughter of the great E55 donor cow that we had so much success with. Poll test pending.



lot **47**

BLCC *Mr Sheriff* 288H

KUNTZ MARSHALL 12Y
KUNTZ SHERIFF 8A
 PEACOCK'S LI'L NETTIE 23Y

WHEATLAND KILL SWITCH
MAPLE LAKE KILLSWITCH 8511
 ACS MS WILMA 265W

BMD RED WALKING TALL 13W
 TIMBER WENDY 3W
 MUIRHEAD'S KOSMO 27N
 MUIRHEAD NETTIE 5W

WHEATLAND CIRCUIT BREAKER
 HR/RR MS CANDACE T73
 TNT TOP GUN R244
 HAAS RANCH G217

CE	BW	WW	YW	MILK	MCE	MWWT
14.0	-0.2	76.0	112.1	29.1	6.9	67.1

- ◆ POLLED PUREBRED
- ◆ PG1342952
- ◆ BLCC 288H
- ◆ MARCH 15, 2020
- ◆ BW: 82 LBS
- ◆ ACT WW: 687 LBS

If you have a lot of heifers to breed this spring, 288H could fit the program quite nicely. 288H has great length, style and predictability bred into him. He should calve like a dream with his type and low birth weight. 8511F was purchased from Maple Lake Stock Farms and we are thrilled with how she is developing as a young cow. Poll test pending.



lot **48**

BLCC *Mr Finest* 317H

MRL RED WHISKEY 101B
PWK GIBSONS FINEST 6Y 52E
 PWK MS PAULA 39W 6Y

KUNTZ SHERIFF 8A
BLCC MISS SHERIFF 33C
 BLCC MISS PONDEROSA 380A

TNT BOOTLEGGER Z268
 MRL MISS 677Y
 SUNNY VALLEY WISE GUY 80W
 PWK MS PAULA 122P 39W

KUNTZ MARSHALL 12Y
 PEACOCK'S LI'L NETTIE 23Y
 KOP PONDEROSA 144Y
 BLCC MISS FIVE STAR 48T

CE	BW	WW	YW	MILK	MCE	MWWT
9.2	2.7	80.2	119.9	31.4	7.3	71.5

- ◆ POLLED PUREBRED
- ◆ PENDING
- ◆ BLCC 317H
- ◆ MARCH 24, 2020
- ◆ BW: 90 LBS
- ◆ ACT WW: 705 LBS

A standout son of Gibsons Finest that is the youngest bull in the sale, but gives up nothing to his pen mates. Excellent performance, eye appeal thickness and do-ability, great length and comes from a hard-working young female. The Gibsons Finest progeny were very well received in our female sale this past December, with several being sale features.

BLACKS



lot **49** **BLCC** *Mr Edge* **18G**

S A V CUTTING EDGE 4857 MICH WHEATLAND BULL 7147E COPPER CRK LADY 1210	S A V HARVESTOR 0338 S A V BLACKCAP MAY 5530 EXAR LUTTON 1831 CHERRY KNOLL LADY LOLA LFE MR LEWIS 462P LFE RS FIRSTBASE 29S TNT DYNAMITE BLACK L137 HAAS RANCH G217
LFE BLACK RIDGELINE 536W BLCC MISS RIDGELINE 8D ACS BLACK MERCEDES 818U	

CE	BW	WW	YW	MILK	MCE	MWWT
5.2	3.6	66.9	97.5	23.0	0.0	56.5

- ◆ POLLED PERCENTAGE
- ◆ PENDING
- ◆ BLCC 18G
- ◆ FEBRUARY 5, 2019
- ◆ BW: 88 LBS
- ◆ ACT WW: 720 LBS

A moderate framed Sim-Angus bull that has great thickness, capacity and a strong cow family behind him. Dam goes back to the great HAAS G217 cow that left such an impact in the breed.

lot **50** **ADBS** *Mr Standard* **43G**

NUG ROYAL RED 324A MAF RED STANDARD 108C IPU 52N POCAHONTAS 215U	LFE BLACK LAKOTA 385W TRIPLE C SMARTY PANTS R TNT ACCELERATOR S226 IPU RED POCAHONTAS 52N LFE MR LEWIS 462P LFE RS FIRSTBASE 29S TNT STING M377 ADBS MISS SANDY 105S
LFE BLACK RIDGELINE 536W ADBS MISS RIDGELINE 110A ADBS MISS UNDERTAKER 102U	

CE	BW	WW	YW	MILK	MCE	MWWT
5.2	3.6	66.9	97.5	23.0	0.0	56.5

- ◆ POLLED PUREBRED
- ◆ BPG1302594
- ◆ ADBS 43G
- ◆ FEBRUARY 13, 2019
- ◆ BW: 94 LBS
- ◆ ACT WW: 830 LBS

A hetero-black son of Red Standard that is built just like his sire. 43G has a lot of muscle mass and eye appeal. His dam is a great female that can get the job done and has a top heifer in the open pen this year. Poll test pending.





lot **51** BLCC *Mr Dealer* 87G

HARVIE JDF WALLBANGER111X ERIXON DEALER 63Z ERIXON LADY 35T	SHS ENTICER P1B JDF PEPSI 61U CNS DREAM ON L186 TSC GLITTER DAY RED PEPPER DOC 984R KWA MS ROCK 7P LAZY S BLACK 823P BLCC MISS 180P
KWA RED ROCK 5T BLCC MISS ROCK 5X BLCC MISS RED 395U	

CE	BW	WW	YW	MILK	MCE	MWWT
7.5	4.6	86.4	134.0	24.5	4.8	67.7

- ◆ POLLED PUREBRED
- ◆ BPG1328435
- ◆ BLCC 87G
- ◆ FEBRUARY 18, 2019
- ◆ BW: 96 LBS
- ◆ ACT WW: 785 LBS

A big, stout, deep sided Dealer son that is hetero-black and is ready for heavy service. Great capacity and muscle expression and will have the ability to sire a great calf crop. His dam is a hardworking, easy keeping female that has produced very well for us. Poll test pending.

lot **52** BLCC *Mr Swagger* 185G

WHEATLAND SWAGGER 343A MAPLE LAKE 6666 \ HP-HOP CC-HOB MAPLE LAKE 3266	WHEATLAND PREDATOR 922W WHEATLAND LADY 721 T WHEATLAND BULL 786T ACS MS WILMA 265W LBR CROCKET R81 SKORS MS CHOCOLATE 179S LAZY S BLACK 823P BLCC MISS 214R
SKORS BLACK CROCKET 234Z BLCC MISS CROCKETT 295C BLCC MISS RED 213U	

CE	BW	WW	YW	MILK	MCE	MWWT
6.4	3.9	78.3	119.3	25.8	3.3	65.0

- ◆ POLLED PUREBRED
- ◆ BPG1328517
- ◆ BLCC 185G
- ◆ FEBRUARY 27, 2019
- ◆ BW: 88 LBS
- ◆ ACT WW: 770 LBS

A Swagger son that is moderate framed and beefy. Swagger has done a great job for us here and continuous to do so. The dam is an ideal female with an excellent udder and also happens to be the dam of the Black Sheriff son we are using very successfully in the heifer pen. Poll/color test pending.





53

lot **53**

BLCC *Mr Swagger* 212G

◆ POLLED PUREBRED
◆ BPG1328536

◆ BLCC 212G
◆ MARCH 2, 2019

◆ BW: 90 LBS
◆ ACT WW: 795 LBS

WHEATLAND SWAGGER 343A
MAPLE LAKE 6666 \ HP-HOP CC-HOB
MAPLE LAKE 3266

KWA RED ROCK 5T
BLCC MISS RED ROCK 336A
BLCC MISS RED 334U

WHEATLAND PREDATOR 922W
WHEATLAND LADY 721 T
WHEATLAND BULL 786T
ACS MS WILMA 265W
DAY RED PEPPER DOC 984R
KWA MS ROCK 7P
LAZY S BLACK 823P
BLCC MISS 8N

CE	BW	WW	YW	MILK	MCE	MWWT
9.8	2.6	77.6	117.8	25.8	5.9	64.6

A thick made, wide topped Swagger son that will increase performance and weaning weights in his calves and add some great maternal power through his daughters. His dam is a prolific, easy keeping female with a tidy udder and is low maintenance. Exceptional performance, great structure and is ready to go to work. Hetero black. Poll test pending.



lot **54** BLCC *Mr Swagger* 220G

WHEATLAND SWAGGER 343A
MAPLE LAKE 6666
 MAPLE LAKE 3266

WHEATLAND PREDATOR 922W
 WHEATLAND LADY 721 T
 WHEATLAND BULL 786T
 ACS MS WILMA 265W

LFE BLACK RIDGELINE 536W
BLCC MISS RIDGELINE 215A
 WINDMILL MS BEEF 137U

LFE MR LEWIS 462P
 LFE RS FIRSTBASE 29S
 IPU 414K MR BEEF 12R
 WINDMILL DOMINO 47R

CE	BW	WW	YW	MILK	MCE	MWWT
5.5	4.3	74.5	108.7	25.6	0.6	62.9

- ◆ POLLED PUREBRED
- ◆ BPG1302554
- ◆ BLCC 220G
- ◆ MARCH 2, 2019
- ◆ BW: 92 LBS
- ◆ ACT WW: 800 LBS

A Swagger son that is long bodied, low set and thick made. 220G has great width of top, exceptional capacity, great hair coat and the performance that Swagger is leaving in his progeny. 215A is a big volumed, great uddered female that has progeny in the programs of Rosehill Cattle Company and Westoba Farms. Poll/color test pending.



lot **55** BLCC *Mr Alliance* 225G

WS PILGRIM H182U
CCLT ALLIANCE 91C
 BROOKS SHINIA 1A

CNS DREAM ON L186
 WS MARLA 276M
 BB BARACK 1017T
 BROOKS RED HOT Y17

R PLUS 5015C
BLCC MISS 5015C 156E
 SPRINGCREEK SKY 50T

WFL ABSOLUTE 51Y
 IPU MS. 56U LINER 15A
 LAZY S RED SKY 120R
 SPRINGCREEK LINNE 23R

CE	BW	WW	YW	MILK	MCE	MWWT
8.2	2.9	77.6	105.8	20.7	2.5	59.5

- ◆ POLLED PUREBRED
- ◆ BPG1328542
- ◆ BLCC 225G
- ◆ MARCH 2, 2019
- ◆ BW: 84 LBS
- ◆ ACT WW: 745 LBS

A low birth weight Alliance son that could work the heifer pen. He has a moderate frame and exceptional thickness. The dam is a great young female that we really like, the grand dam was purchased from the great program of Spring Creek Simmentals and is a beautifully made female. Poll/color test pending.



lot **56** BLCC *Mr Revenue* 237G

PROFIT
WHEATLAND REVENUE 677D
 WHEATLAND LADY 935W

WWS PILGRIM H182U
 WAGR PANARAMA 204Z
 WHEATLAND BULL 680S
 WHEATLAND LADY 727 T

KWA RED ROCK 5T
BLCC MISS RED ROCK 18C
 BLCC MISS STUBBY 249A

DAY RED PEPPER DOC 984R
 KWA MS ROCK 7P
 LFE BS LEWIS 322U
 BLCC MISS 8N

CE	BW	WW	YW	MILK	MCE	MWWT
7.2	4.1	79.4	116.4	24.6	4.7	64.3

- ◆ POLLED PUREBRED
- ◆ BPG1328550
- ◆ BLCC 237G
- ◆ MARCH 3, 2019
- ◆ BW: 94 LBS
- ◆ ACT WW: 805 LBS

A Revenue son that has power and predictability. 237G is long bodied, has excellent performance and tremendous eye appeal. He should sire an outstanding calf crop. The cow power behind this bull is exceptional. 18C is a deep bodied, easy doing Red Rock daughter that you would love to have a whole herd of. Poll/color test pending.

lot **57****BLCC** *Mr R Plus* 238G

R PLUS 2151Z
R PLUS 6296D
 MISS R PLUS 3284A

R PLUS 110X
BLCC MISS SLEDGE 281C
 BLCC MISS STING 245S

PRL TOBASCO 201T
 SUN STAR MISS DRIVE
 GCF RESOLUTION U15
 MISS R PLUS 67X

R PLUS REDGE 8018U
 MISS R PLUS 006K
 TNT STING M377
 BLCC MISS 133P

CE	BW	WW	YW	MILK	MCE	MWWT
6.9	4.9	77.9	109.7	21.3	4.9	60.2

- ◆ POLLED PUREBRED ◆ BLCC 238G ◆ BW: 96 LBS
 ◆ BPG1345553 ◆ MARCH 4, 2019 ◆ ACT WW: 780 LBS

A long bodied, thick made bull with some added frame to increase weaning weights and add some uniformity. The dam is a big framed female that milks very well and works hard. Hetero black.

lot **58****BLCC** *Mr Revenue* 239G

PROFIT
WHEATLAND REVENUE 677D
 WHEATLAND LADY 935W

WHEATLAND RED TEDDY 457P
BLCC MISS BLACK TEDDY153W
 BLCC MISS DYNAMITE 23S

WS PILGRIM H182U
 WAGR PANARAMA 204Z
 WHEATLAND BULL 680S
 WHEATLAND LADY 727 T
 WHEATLAND BULL 131L
 WHEATLAND LADY 902J
 TNT DYNAMITE BLACK L137
 BLCC MISS 116P

CE	BW	WW	YW	MILK	MCE	MWWT
5.7	3.8	73.3	106.4	23.6	4.0	60.3

- ◆ POLLED PUREBRED ◆ BLCC 239G ◆ BW: 94 LBS
 ◆ BPG1328551 ◆ MARCH 4, 2019 ◆ ACT WW: 792 LBS

This Revenue son should have a great and productive future ahead of him. Long, deep, wide topped and comes from a model female that goes back to our E55 donor cow, who left us with a legacy of great daughters and granddaughters in production. 239G will be ready to go to work. Poll/color test pending.

lot **59****BLCC** *Mr R Plus* 287G

R PLUS 2151Z
R PLUS 6296D
 MISS R PLUS 3284A

TNT TANKER U263
BLCC MISS TANKER 31Y
 LFE KATARINA 604N

PRL TOBASCO 201T
 SUN STAR MISS DRIVE
 GCF RESOLUTION U15
 MISS R PLUS 67X

MR NLC SUPERIOR S6018
 TNT MISS S17
 TNT DYNAMITE BLACK L137
 LFE KATARINA 13J

CE	BW	WW	YW	MILK	MCE	MWWT
7.5	3.1	72.3	102.7	19.6	5.5	55.8

- ◆ HORNED PUREBRED ◆ BLCC 287G ◆ BW: 90 LBS
 ◆ BG1328838 ◆ MARCH 13, 2019 ◆ ACT WW: 780 LBS

A long spined R Plus son that should calve well and boost performance and add strong maternal traits. The dam is a daughter of the 604N donor cow and has been a consistent producer. Poll/color test pending.





lot **60** BLCC *Mr Dealer* 288G

HARVIE JDF WALLBANGER111X
ERIXON DEALER 63Z
 ERIXON LADY 35T

LFE BS LEWIS 322U
BLCC MISS STUBBY 177C
 KOP MS TRACKER 192W

SHS ENTICER P1B
 JDF PEPSI 61U
 CNS DREAM ON L186
 TSC GLITTER

R PLUS BLACKEDGE
 LFE BS MS ARNOLD 135S
 CG TRACKER 45T
 KOP MS KNIGHT 108R

CE	BW	WW	YW	MILK	MCE	MWWT
5.4	5.4	83.8	126.5	21.3	0.2	63.2

- ◆ POLLED PUREBRED
- ◆ BPG1328839
- ◆ BLCC 288G
- ◆ MARCH 14, 2019
- ◆ BW: 92 LBS
- ◆ ACT WW: 770 LBS

A Dealer son that will go onto to make an outstanding herd sire. Dealer surpassed all our expectations as a sire to consistently transmit depth, capacity, eye appeal and performance. 177C is a productive daughter of 192W, who was purchased from the KOPP dispersal and was flushed successfully this past spring. 288G will sire progeny that will exceed all expectations. Poll/color test pending.



lot **61** BLCC *Mr 5015C* 303G

WFL ABSOLUTE 51Y
R PLUS 5015C
 IPU MS. 56U LINER 15A

JPC MR LINER 75B
BLCC MISS LINER 76E
 BLCC MISS FORCE 9Y

LFE STRAIT UP 454W
 WFL MS BLACK FLASH 8068U
 SPRINGCREEK LINER 56U
 RTC/JETS UPTOWN GIRL 15U
 SPRINGCREEK LINER 56U
 DRAKE TULA 1R
 HOOKS SHEAR FORCE 38K
 BLCC MISS BLACK STING284W

CE	BW	WW	YW	MILK	MCE	MWWT
8.3	1.7	79.6	122.7	24.7	3.1	64.5

- ◆ POLLED PUREBRED
- ◆ BPG1328859
- ◆ BLCC 303G
- ◆ MARCH 20, 2019
- ◆ BW: 78 LBS
- ◆ ACT WW: 725 LBS

A low birth weight son of 5015C that could work a sizable group of heifers this spring. Dam is young female that looks like she will be an easy keeping, low maintenance cow. Plenty of maternal power in his pedigree with the great Tula 1R and Whoopie D92 anchoring his dam's pedigree. Poll/color test pending.



lot **62** BLCC *Mr Revenue* 348G

PROFIT
WHEATLAND REVENUE 677D
 WHEATLAND LADY 935W

REMINGTON ON TARGET 2S
BLCC MISS TARGET 56X
 WFL BLACK LADY 505H

WS PILGRIM H182U
 WAGR PANARAMA 204Z
 WHEATLAND BULL 680S
 WHEATLAND LADY 727 T

REMINGTON RED LABEL HR
 DRAKE SOFT TOUCH 15M
 LRS PREFERRED STOCK 370C
 LFE BLACK LADY 115F

CE	BW	WW	YW	MILK	MCE	MWWT
4.2	4.7	76.4	114.2	19.8	1.5	58.0

- ◆ POLLED PUREBRED
- ◆ BPG1328908
- ◆ BLCC 348G
- ◆ APRIL 18, 2019
- ◆ BW: 88 LBS
- ◆ ACT WW: 675 LBS

A Revenue son from a top female. 56X is a well-made cow that is a daughter of the immortal 505H cow, who has her own page in the industry books of the Simmental breed, with many top sellers throughout her lifetime. 348G has thickness, capacity and is ready to go to work. Poll/color test pending.



lot **63**

BLCC *Mr Edge* 3H

S A V CUTTING EDGE 4857
MICH WHEATLAND BULL 7147E
 COPPER CRK LADY 1210

LFE BLACK RIDGELINE 536W
BLCC MISS RIDGELINE 8D
 ACS BLACK MERCEDES 818U

S A V HARVESTOR 0338
 S A V BLACKCAP MAY 5530
 EXAR LUTTON 1831
 CHERRY KNOLL LADY LOLA
 LFE MR LEWIS 462P
 LFE RS FIRSTBASE 29S
 TNT DYNAMITE BLACK L137
 HAAS RANCH G217

PE	CE	BW	WW	YW	MILK	MCE	MWWT
----	----	----	----	----	------	-----	------

- ◆ POLLED PERCENTAGE
- ◆ PENDING
- ◆ BLCC 3H
- ◆ JANUARY 24, 2020
- ◆ BW: 88 LBS
- ◆ ACT WW: 732 LBS

A moderate framed, thick made Sim-Angus herd bull prospect that comes from a powerful maternal background. The great HAAS G217 cow produced numerous high sellers within the industry and was a very powerful female. 3H will produce amazing daughters and provide some sought-after hybrid vigor in his progeny.

lot **64**

BLCC *Mr Edge* 4H

S A V CUTTING EDGE 4857
MICH WHEATLAND BULL 7147E
 COPPER CRK LADY 1210

WHEATLAND FINAL AFFAIR
BLCC MISS FINAL AFFAIR 7D
 BLCC MISS STUBBY 20B

S A V HARVESTOR 0338
 S A V BLACKCAP MAY 5530
 EXAR LUTTON 1831
 CHERRY KNOLL LADY LOLA
 STF ROYAL AFFAIR Z44M
 WHEATLAND LADY 212Z
 LFE BS LEWIS 322U
 BLCC MISS RED ROCK 40Z

PE	CE	BW	WW	YW	MILK	MCE	MWWT
----	----	----	----	----	------	-----	------

- ◆ POLLED PERCENTAGE
- ◆ PENDING
- ◆ BLCC 4H
- ◆ JANUARY 25, 2020
- ◆ BW: 86 LBS
- ◆ ACT WW: 732 LBS

A Sim-Angus bull with great rib shape, low birth weight, exceptional performance and comes from a solid mother cow. 4H should add some hybrid vigor and uniformity to his progeny. The dam is an easy keeping female that milks extremely well.





lot **65** BLCC *Mr B Sheriff* 5H

KUNTZ SHERIFF 8A
BLCC MR SHERIFF 327E
 BLCC MISS CROCKETT 295C

LFE BS LEWIS 322U
BLCC MISS STUBBY 154A
 BLCC MISS POWERLINE 182W

KUNTZ MARSHALL 12Y
 PEACOCK'S LI'L NETTIE 23Y
 SKORS BLACK CROCKET 234Z
 BLCC MISS RED 213U

R PLUS BLACKEDGE
 LFE BS MS ARNOLD 135S
 KENCO/MF POWERLINE 204L
 TNT MISS AMERICANA E55

CE	BW	WW	YW	MILK	MCE	MWWT
8.1	2.5	74.2	109.1	27.2	1.3	64.3

- ◆ POLLED PUREBRED
- ◆ BPG1337688
- ◆ BLCC 5H
- ◆ JANUARY 25, 2020
- ◆ BW: 90 LBS
- ◆ ACT WW: 860 LBS

A long-framed son of Black Sheriff that comes from a powerful female that is a descendant of our E55 cow family. 5H has great length of body, excellent haircoat, great performance and should contribute very positively to any program. His daughters should be outstanding. Poll/color test pending.



lot **66** BLCC *Mr Swagger* 9H

WHEATLAND SWAGGER 343A
MAPLE LAKE 6666
 MAPLE LAKE 3266

LFEISS BLACKADVANCE 426U
BLCC MISS ADVANCE 71B
 NJC SVF LOVE ME DONT U

WHEATLAND PREDATOR 922W
 WHEATLAND LADY 721 T
 WHEATLAND BULL 786T
 ACS MS WILMA 265W

REMINGTON ON TARGET 2S
 LFE BILLY 80M
 PVF-BF BF26 BLACK JOKER
 NJC EBONY ANTOINETTE

CE	BW	WW	YW	MILK	MCE	MWWT
8.1	2.5	74.2	109.1	27.2	1.3	64.3

- ◆ POLLED PUREBRED
- ◆ PENDING
- ◆ BLCC 9H
- ◆ JANUARY 26, 2019
- ◆ BW: 92 LBS
- ◆ ACT WW: 835 LBS

A Swagger son with some style. 9H profiles beautifully and is the type of bull that will mature to be a powerful specimen. Lots of capacity, rib shape, excellent top and comes from a great female that is a result of our flush program. 71B is a hardworking female that has an excellent udder and has an outstanding daughter in production for us.



lot **67** BLCC *Mr 5015C* 16H

WFL ABSOLUTE 51Y
R PLUS 5015C
 IPU MS. 56U LINER 15A

KOP CROSBY 137W
BLCC MISS CROSBY 214C
 BLCC MISS 124R 183U

LFE STRAIT UP 454W
 WFL MS BLACK FLASH 8068U
 SPRINGCREEK LINER 56U
 RTC/JETS UPTOWN GIRL 15U

MUIRHEAD LIVE WIRE 95R
 KOP MS BENGIE 6P
 BLCC 124R
 BLCC MISS 13R

CE	BW	WW	YW	MILK	MCE	MWWT
3.9	4.6	85.6	129.6	27.4	2.2	70.2

- ◆ POLLED PUREBRED
- ◆ BPG1337701
- ◆ BLCC 16H
- ◆ JANUARY 29, 2020
- ◆ BW: 94 LBS
- ◆ ACT WW: 865 LBS

A long spined, deep made, hetero black son of 5015C that should increase weaning weights and add excellent maternal traits to his progeny. 5015C will consistently add thickness, do-ability, great temperament and eye appeal to his calves and 16H will be no different. 214C has proven to be a great producer and is a female that we hold in high regard, and has raised some excellent progeny to date. Poll test pending.



68

lot **68**

BLCC *Mr Liner* 17H

◆ POLLED PUREBRED
◆ BPG1337704

◆ BLCC 17H
◆ JANUARY 29, 2020

◆ BW: 90 LBS
◆ ACT WW: 845 LBS

SPRINGCREEK LINER 56U
JPCC MR LINER 75B
DRAKE TULA 1R

WTW BEST WESTERN 5X
KOP MS BEST WESTERN 22A
KOP MS TOUCHDOWN 145Y

RCC/TCF LINE DRIVE M181
NEVAS L93
TCF/RCC TEMPTATION GJ640
DCC 5N
NCB RED DREAM 23T
WTW RED 942J LASS 8061U
IPU RED TOUCHDOWN 32S
KOP MS NICOLE 60N

A hetero black, blaze faced Liner son that has lots of depth, capacity, width of top and eye appeal and will make a quality herd sire that will produce pounds, predictability, and profit! His dam is a model female that was purchased from the KOPP dispersal and raises top quality year after year. 17H should mature to be a producer of quality progeny and will sire some amazing daughters, hopefully will also add the money stripe to most of his offspring as well. Poll test pending.

CE	BW	WW	YW	MILK	MCE	MWWT
6.2	3.2	72.6	110.8	29.6	5.3	65.9



69

lot **69**

BLCC *Mr Liner* 19H

◆ POLLED PUREBRED
◆ BPG1337707

◆ BLCC 19H
◆ JANUARY 30, 2020

◆ BW: 94 LBS
◆ ACT WW: 858 LBS

SPRINGCREEK LINER 56U
JPCC MR LINER 75B
DRAKE TULA 1R

AJB STINGRAY 63Y
AJB BLACK LADY RAY 4D
BLCC MISS FORCE 4X

RCC/TCF LINE DRIVE M181
NEVAS L93
TCF/RCC TEMPTATION GJ640
DCC 5N
WHEATLAND BULL 995W
AJB SPECKLED PEARL 63W
HOOKS SHEAR FORCE 38K
BLCC MISS 124R 353U

This Liner son has thickness, capacity, eye appeal and is very correct. He has excellent spring of rib, dimension, and do-ability that his sire is known for as well. 4D is a beautiful female that is excellent uddered and very good tempered and looks to be the front pasture type. Poll/color test pending.

CE	BW	WW	YW	MILK	MCE	MWWT
8.1	2.5	68.7	108.6	27.4	5.7	61.8



70

lot **70**

BLCC *Mr Dealer* **32H**

◆ POLLED PUREBRED
◆ BPG1337731

◆ BLCC 32H
◆ FEBRUARY 2, 2020

◆ BW: 96 LBS
◆ ACT WW: 857 LBS

HARVIE JDF WALLBANGER111X ERIXON DEALER 63Z ERIXON LADY 35T	SHS ENTICER P1B JDF PEPSI 61U CNS DREAM ON L186 TSC GLITTER LBR CROCKET R81 SKORS MS CHOCOLATE 179S KIMLAKE INSPIRATION 90T BLCC MISS 242R
SKORS BLACK CROCKET 234Z BLCC MISS BCROCKETT 243B BLCC MISS INSPIRATION 268	

A Dealer son that is a replica of his sire. 32H is loaded with depth and capacity, has great length, top and muscle expression, great temperament and tremendous eye appeal. You can only envision what he will look like when he matures. 243B is a neat uddered, long bodied female that is low maintenance and has a superb udder. Hetero black. Poll test pending.

CE	BW	WW	YW	MILK	MCE	MWWT
4.1	6.4	85.9	132.0	23.7	1.4	66.7



lot **71** **BLCC** *Mr Swagger* **38H**

WHEATLAND SWAGGER 343A MAPLE LAKE 6666 \ HP-HOP CC-HOB MAPLE LAKE 3266	WHEATLAND PREDATOR 922W WHEATLAND LADY 721 T WHEATLAND BULL 786T ACS MS WILMA 265W TNT DYNAMITE BLACK L137 BLCC MISS 34P LAZY S WHISTLER 523M WINDMILL MS ROONIK37L
BLCC MR DYNAMITE 2S WINDMILL MS DYNAMITE 101W WINDMILL MS WHISLER 137R	

CE	BW	WW	YW	MILK	MCE	MWWT
5.4	4.5	78.7	116.6	21.7	2.9	61.1

- ◆ POLLED PUREBRED
- ◆ BPG1342276
- ◆ BLCC 38H
- ◆ FEBRUARY 2, 2020
- ◆ BW: 94 LBS
- ◆ ACT WW: 845 LBS

This Swagger son has stood out for sometime and has been admired for his eye appeal, do-ability, capacity, phenotype, and pedigree. 38H has exceptional performance and is so typical of the Swagger progeny. The dam has been a great purchase from the Windmill Simmentals dispersal sale. She is big volumed, with a very tidy udder. This future herd sire has greatness bred into him. Poll/color test pending.



lot **72** **BLCC** *Mr Edge* **40H**

S A V CUTTING EDGE 4857 MICH WHEATLAND BULL 7147E COPPER CRK LADY 1210	S A V HARVESTOR 0338 S A V BLACKCAP MAY 5530 EXAR LUTTON 1831 CHERRY KNOLL LADY LOLA R PLUS BLACKEDGE LFE BS MS ARNOLD 135S KWA RED ROCK 5T BLCC MISS STING 408X
LFE BS LEWIS 322U BLCC MISS STUBBY 20B BLCC MISS RED ROCK 40Z	

CE	BW	WW	YW	MILK	MCE	MWWT

- ◆ POLLED PERCENTAGE
- ◆ PENDING
- ◆ BLCC 40H
- ◆ FEBRUARY 3, 2020
- ◆ BW: 86 LBS
- ◆ ACT WW: 725 LBS

An outstanding Sim-Angus herd bull prospect. 40H displays a ton of rib shape and dimension, has adequate length and eye appeal and comes from a fantastic mother cow. 20B is a heavy milking, hard working cow that continues to raise the bar. We are very pleased with this half blood bull.



lot **73** BLCC *Mr Swagger* 51H

WHEATLAND SWAGGER 343A	WHEATLAND PREDATOR 922W
MAPLE LAKE 6666	WHEATLAND LADY 721 T
MAPLE LAKE 3266	WHEATLAND BULL 786T
	ACS MS WILMA 265W
KWA RED ROCK 5T	DAY RED PEPPER DOC 984R
BLCC MISS RED ROCK 65A	KWA MS ROCK 7P
OAKVIEW MISS MOLLY 56U	IPU RED NUGGET 132N
	WTG PAMELA

CE	BW	WW	YW	MILK	MCE	MWWT
6.6	3.8	80.3	121.3	25.2	3.7	65.4

- ◆ POLLED PUREBRED
- ◆ BPG1342284
- ◆ BLCC 51H
- ◆ FEBRUARY 4, 2020
- ◆ BW: 92 LBS
- ◆ ACT WW: 835 LBS

A hetero black son of Swagger that has excellent thickness, capacity, width of top, much expression and eye appeal, Swagger is great at passing on these traits to all his progeny. His dam is a big framed Red Rock daughter that excels in fleshing ability and milks very well. 51H has been a standout all summer and fall and will develop into a powerful herd sire. Poll test pending.

lot **74** BLCC *Mr Liner* 54H

SPRINGCREEK LINER 56U	RCC/TCF LINE DRIVE M181
JPCC MR LINER 75B	NEVAS L93
DRAKE TULA 1R	TCF/RCC TEMPTATION GJ640
	DCC 5N
LFE BS LEWIS 322U	R PLUS BLACKEDGE
BLCC MISS STUBBY 294C	LFE BS MS ARNOLD 135S
BLCC MISS POWERLINE 182W	KENCO/MF POWERLINE 204L
	TNT MISS AMERICANA E55

CE	BW	WW	YW	MILK	MCE	MWWT
5.4	4.1	73.4	110.1	26.9	1.8	63.6

- ◆ POLLED PUREBRED
- ◆ BPG1342288
- ◆ BLCC 54H
- ◆ FEBRUARY 5, 2020
- ◆ BW: 94 LBS
- ◆ ACT WW: 820 LBS

We are strong believers in cow families and this hetero black bull comes from one of our best. The E55 cow was a model female that left us a legacy of great producing daughters and granddaughters. This bull's females will be incredible. 54H will be an easy fleshing, high-capacity, low maintenance herd sire that will do a phenomenal job of siring a great calf crop. Poll test pending.





lot **75** BLCC *Mr Revenue* 60H

PROFIT WHEATLAND REVENUE 677D WHEATLAND LADY 935W	WS PILGRIM H182U WAGR PANARAMA 204Z WHEATLAND BULL 680S WHEATLAND LADY 727 T TNT STING M377 BLCC MISS BLACK PEARL 1P ACC1 HUSTLER 2N BLCC MISS HOUSTON 74S
BLCC MR BLACK STING 155S BLCC MISS BLACKSTING 117Z BLCC MISS HUSTLER 79U	

CE	BW	WW	YW	MILK	MCE	MWWT
6.1	4.1	71.2	101.9	18.9	3.2	54.5

- ◆ POLLED PUREBRED
- ◆ BPG1342291
- ◆ BLCC 60H
- ◆ FEBRUARY 5, 2020
- ◆ BW: 94 LBS
- ◆ ACT WW: 820 LBS

An outstanding, blaze faced Revenue son that comes from one of our best cow families, TNT Miss Whoopie D92, who along with her full sister, E55, anchored our donor program for many years, with many favorable results. 60H is a long-bodied beef bull that will inject a lot of positive traits to his calf crop: predictability, eye appeal, performance, and superior daughters. Poll/color test pending.

lot **76** BLCC *Mr 5015C* 64A

WFL ABSOLUTE 51Y R PLUS 5015C IPU MS. 56U LINER 15A	LFE STRAIT UP 454W WFL MS BLACK FLASH 8068U SPRINGCREEK LINER 56U RTC/JETS UPTOWN GIRL 15U HC POWER DRIVE 88H SAFN GLAMOUR 11J ER AMERICANA 537B HH HAPPY VELVET P091E
KENCO/MF POWERLINE 204L BLCC MISS POWERLINE 182W TNT MISS AMERICANA E55	

CE	BW	WW	YW	MILK	MCE	MWWT
4.3	4.1	79.3	120.2	22.4	0.1	62.1

- ◆ POLLED PUREBRED
- ◆ BPG1342296
- ◆ BLCC 64H
- ◆ FEBRUARY 6, 2020
- ◆ BW: 94 LBS
- ◆ ACT WW: 840 LBS

Powerful! 64H is a bull that quickly gets noticed in the pen. Great length and depth of body, tremendous capacity, and wide across his top. The 5015C sire group is always very consistent, siring calving ease with performance. Again, another dam from the E55 cow family, his sons will be great and his daughters will be superior. Poll/color test pending.





77

lot **77**

BLCC *Mr Liner* 77H

SPRINGCREEK LINER 56U
JPCC MR LINER 75B
 DRAKE TULA 1R

 3D RED POWER 150Z
BLCC MISS RED POWER 170E
 BLCC MISS STUBBY 214A

RCC/TCF LINE DRIVE M181
 NEVAS L93
 TCF/RCC TEMPTATION GJ640
 DCC 5N

 LFEISS BLACKADVANCE 426U
 CROSSROAD RAMONA 375R
 LFE BS LEWIS 322U
 BLCC MISS 180R

CE	BW	WW	YW	MILK	MCE	MWWT
4.7	4.5	81.9	124.2	30.2	3.1	71.2

- ◆ POLLED PUREBRED
- ◆ BPG1342306
- ◆ BLCC 77H
- ◆ FEBRUARY 7, 2020
- ◆ BW: 90 LBS
- ◆ ACT WW: 815 LBS

Once again, the D92 cow family shines through with this stout prospect. 77H is loaded with style, capacity, muscle and overall dimension that gets him noticed quickly in the bull pen. Again, this bull's daughters will be superior and his sons should weigh up great every fall. This hetero black bull should have a great future. Poll test pending.

lot **78**

BLCC *Mr Liner* 82H

SPRINGCREEK LINER 56U
JPCC MR LINER 75B
 DRAKE TULA 1R

 LFE BLACK RIDGELINE 536W
BLCC MISS RIDGELINE 62Z
 BLCC MISS BLACK POWER172W

RCC/TCF LINE DRIVE M181
 NEVAS L93
 TCF/RCC TEMPTATION GJ640
 DCC 5N

 LFE MR LEWIS 462P
 LFE RS FIRSTBASE 29S
 KENCO/MF POWERLINE 204L
 TNT MISS AMERICANA E55

CE	BW	WW	YW	MILK	MCE	MWWT
5.6	2.8	66.7	102.3	26.9	2.3	60.3

- ◆ POLLED PUREBRED
- ◆ BPG1342309
- ◆ BLCC 82H
- ◆ FEBRUARY 8, 2020
- ◆ BW: 90 LBS
- ◆ ACT WW: 780 LBS

A black baldy son of Liner again from a great producing female from our E55 cow family. 82H has a moderate birth weight, acceptable performance, has lots of shape, muscle and capacity, and should produce those sought after baldy cattle that are in such high demand. His sons will be uniform and his daughters irreplaceable. Poll/color test pending.



78



lot **79**

BLCC *Mr Revenue* 92H

PROFIT
WHEATLAND REVENUE 677D
 WHEATLAND LADY 935W

 WHEATLAND RED TEDDY 457P
BLCC MISS BLACK TEDDY 153W
 BLCC MISS DYNAMITE 23S

WS PILGRIM H182U
 WAGR PANARAMA 204Z
 WHEATLAND BULL 680S
 WHEATLAND LADY 727 T
 WHEATLAND BULL 131L
 WHEATLAND LADY 902J
 TNT DYNAMITE BLACK L137
 BLCC MISS 116P

CE	BW	WW	YW	MILK	MCE	MWWT
5.6	3.9	73.6	107.0	23.6	3.9	60.4

- ◆ POLLED PUREBRED
- ◆ BPG1342317
- ◆ BLCC 92H
- ◆ FEBRUARY 9, 2020
- ◆ BW: 94 LBS
- ◆ ACT WW: 805 LBS

These Revenue sons are so similar. 92H possesses that depth, quarter, broad top and eye appeal that we all love to see in a potential herd sire. Lots of length, great haircoat and from a powerful female that traces back to our E55 cow family. His sons will make bulls and his daughter's great replacements. Poll/color test pending.



lot **80**

BLCC *Mr 5015C* 98H

WFL ABSOLUTE 51Y
R PLUS 5015C
 IPU MS. 56U LINER 15A

 KOP CROSBY 137W
BLCC MISS CROSBY 115C
 BLCC MISS RED ROCK 33Y

LFE STRAIT UP 454W
 WFL MS BLACK FLASH 8068U
 SPRINGCREEK LINER 56U
 RTC/JETS UPTOWN GIRL 15U
 MUIRHEAD LIVE WIRE 95R
 KOP MS BENGIE 6P
 KWA RED ROCK 5T
 BLCC MISS TOP GUN 122W

CE	BW	WW	YW	MILK	MCE	MWWT
6.9	3.1	85.6	130.6	26.5	4.2	69.3

- ◆ POLLED PUREBRED
- ◆ BPG1342322
- ◆ BLCC 98H
- ◆ FEBRUARY 9, 2020
- ◆ BW: 88 LBS
- ◆ ACT WW: 820 LBS

A Hetero black son of 5015C that has a low birth weight, yet amazing performance and combines eye appeal, calving ease, and curve bending growth. 115C is a long bodied, great uddered Crosby daughter that we absolutely love. Poll test pending.



lot **81**

BLCC *Mr Swagger* 99H

WHEATLAND SWAGGER 343A
MAPLE LAKE 6666
 MAPLE LAKE 3266

 CMS SEIMENKO 119Y
LNS BURLESQUE 456B
 MADER P IRON MAIDEN 15X

WHEATLAND PREDATOR 922W
 WHEATLAND LADY 721 T
 WHEATLAND BULL 786T
 ACS MS WILMA 265W
 VIRGINIA RED TEXAS
 CMS RED ROBIN 07N
 MADER P BLACK IRONMAN 22U
 LFE FAMOUS 632T

CE	BW	WW	YW	MILK	MCE	MWWT
6.0	4.4	78.5	116.9	23.5	1.3	62.8

- ◆ POLLED PUREBRED
- ◆ BPG1342323
- ◆ BLCC 99H
- ◆ FEBRUARY 10, 2020
- ◆ BW: 90 LBS
- ◆ ACT WW: 815 LBS

This bull's nickname is "Brick", he has extreme thickness and is very broad across his top, you could set a table on his back! 99H has certainly looked the part for some time and we feel he is going to turn into a phenomenal herd sire. His dam has been a wonderful acquisition for us and has produced extremely well. Moderate birth weight with outstanding performance and a great temperament. Poll/color test pending.



lot **82** BLCC *Mr 5015C* 113H

WFL ABSOLUTE 51Y
R PLUS 5015C
 IPU MS. 56U LINER 15A

SPRINGCREEKWALLBANGER 11Z
BLCC MISS WALLBANGER 5E
 BLCC MISS BLACKSTING 117Z

LFE STRAIT UP 454W
 WFL MS BLACK FLASH 8068U
 SPRINGCREEK LINER 56U
 RTC/JETS UPTOWN GIRL 15U
 HARVIE JDF WALLBANGER111X
 SPRINGCREEK LINNE 72S
 BLCC MR BLACK STING 155S
 BLCC MISS HUSTLER 79U

CE	BW	WW	YW	MILK	MCE	MWWT
7.1	2.8	83.6	128.4	22.7	1.4	64.5

- ◆ POLLED PUREBRED
- ◆ BLCC 113H
- ◆ BW: 86 LBS
- ◆ BPG1342333
- ◆ FEBRUARY 11, 2020
- ◆ ACT WW: 800 LBS

Another curve bending herd sire prospect sired by the great 5015C. 113H has a very small birth weight and grew like wildfire, his performance is second to none. His dam is a bald faced, great uddered young female that raised a full sister that was a feature lot in our last female sale and is a hardworking, eye appealing cow. 113H has a great temperament, turn him loose with your heifers and clip the coupons next year. Hopefully add a little chrome as well. Poll/color test pending.

lot **83** BLCC *Mr 5015C* 114H

WFL ABSOLUTE 51Y
R PLUS 5015C
 IPU MS. 56U LINER 15A

ERIXON DEALER 63Z
AJB BLUE ANGEL 25C
 AJB RED PEARL 8A

LFE STRAIT UP 454W
 WFL MS BLACK FLASH 8068U
 SPRINGCREEK LINER 56U
 RTC/JETS UPTOWN GIRL 15U
 HARVIE JDF WALLBANGER111X
 ERIXON LADY 35T
 KWA RED ROCK 5T
 AJB SPECKLED PEARL 63W

CE	BW	WW	YW	MILK	MCE	MWWT
6.9	3.6	88.7	139.6	19.6	2.0	64.0

- ◆ POLLED PUREBRED
- ◆ BLCC 114H
- ◆ BW: 94 LBS
- ◆ BPG1342334
- ◆ FEBRUARY 11, 2020
- ◆ ACT WW: 800 LBS

These 5015C sons certainly grow on you, we have been extremely pleased with all of his progeny. 114H boasts tremendous rib shape, abundant muscle and comes from a great female, a Dealer daughter that has surpassed our expectations. Not much guess work with this prospect. Poll/color test pending.





lot **84**

BLCC *Mr Swagger* 124H

WHEATLAND SWAGGER 343A
MAPLE LAKE 6666
 MAPLE LAKE 3266
 KWA RED ROCK 5T
BLCC MISS RED ROCK 336A
 BLCC MISS RED 334U

WHEATLAND PREDATOR 922W
 WHEATLAND LADY 721 T
 WHEATLAND BULL 786T
 ACS MS WILMA 265W
 DAY RED PEPPER DOC 984R
 KWA MS ROCK 7P
 LAZY S BLACK 823P
 BLCC MISS 8N

CE	BW	WW	YW	MILK	MCE	MWWT
9.7	2.7	78.0	118.3	25.8	5.8	64.8

- ◆ POLLED PUREBRED
- ◆ BPG1342341
- ◆ BLCC 124H
- ◆ FEBRUARY 12, 2020
- ◆ BW: 90 LBS
- ◆ ACT WW: 820 LBS

Hetero black and homo good!! 124H has all the credentials to become a positive influence on your next calf crop. Long bodied, great topline, excellent thickness and eye appeal. His dam is a powerful excellent uddered Red Rock daughter that gets the job done every year. Poll test pending.



lot **85**

BLCC *Mr Dealer* 126H

HARVIE JDF WALLBANGER111X
ERIXON DEALER 63Z
 ERIXON LADY 35T
 SPRINGCREEK RANSOM 14Y
BLCC MISS RANSOM 310D
 BLCC MISS D92 NUGGET 210S

SHS ENTICER P1B
 JDF PEPSI 61U
 CNS DREAM ON L186
 TSC GLITTER
 MADER P BLK RANSOM 23U
 SPRINGCREEK LINNE 95R
 IPU RED NUGGET 132N
 TNT MISS WHOOPIE D92

CE	BW	WW	YW	MILK	MCE	MWWT
4.1	5.4	88.3	135.2	22.7	0.8	66.9

- ◆ POLLED PUREBRED
- ◆ BPG1342342
- ◆ BLCC 126H
- ◆ FEBRUARY 12, 2020
- ◆ BW: 90 LBS
- ◆ ACT WW: 790 LBS

Typical of the Dealer progeny, 126H boasts exceptional depth, capacity, muscle expression; temperament and eye appeal. His dam, 310D, certainly did a super job on this front bull. Moderate birth weight, lots of grow, and ready to go to work. Poll/color test pending.



lot **86**

BLCC *Mr 5015C* 127H

WFL ABSOLUTE 51Y
R PLUS 5015C
 IPU MS. 56U LINER 15A
 SKORS BLACK CROCKET 234Z
BLCC MISS BCROCKETT 183B
 BLCC MISS RED ROCK 184W

LFE STRAIT UP 454W
 WFL MS BLACK FLASH 8068U
 SPRINGCREEK LINER 56U
 RTC/JETS UPTOWN GIRL 15U
 LBR CROCKET R81
 SKORS MS CHOCOLATE 179S
 KWA RED ROCK 5T
 BLCC MISS STING 235T

CE	BW	WW	YW	MILK	MCE	MWWT
6.7	3.2	86.1	133.8	25.3	2.6	68.4

- ◆ POLLED PUREBRED
- ◆ BPG1342343
- ◆ BLCC 127H
- ◆ FEBRUARY 13, 2020
- ◆ BW: 90 LBS
- ◆ ACT WW: 818 LBS

An absolute tank, 127H has impressed many with his overall stoutness, capacity, haircoat, and eye appeal. This is the type of bull that you wish you had a pen full of and makes your mouth water. He will mature to be a low maintenance herd sire that should sire some very powerful progeny. His dam is a big volumed, excellent uddered female that we absolutely love. Buy with confidence. Poll/color test pending.

lot **87****BLCC** *Mr Revenue* 129H

PROFIT
WHEATLAND REVENUE 677D
 WHEATLAND LADY 935W

LFE BS LEWIS 322U
BLCC MISS STUBBY 249A
 BLCC MISS 8N

WS PILGRIM H182U
 WAGR PANARAMA 204Z
 WHEATLAND BULL 680S
 WHEATLAND LADY 727 T
 R PLUS BLACKEDGE
 LFE BS MS ARNOLD 135S
 PRICKLY PEAR 150F
 SUN RISE WORKING GAL 25C

CE	BW	WW	YW	MILK	MCE	MWWT
5.3	4.6	75.2	106.0	22.6	1.3	60.2

- ◆ POLLED PUREBRED
- ◆ BPG1342345
- ◆ BLCC 129H
- ◆ FEBRUARY 13, 2020
- ◆ BW: 96 LBS
- ◆ ACT WW: 711 LBS

Another powerful Revenue son that strongly resembles his sire. 129H is a soggy made, deep bodied herd bull prospect that will go onto produce outstanding progeny and look good while doing it. He should add pounds to his progeny every fall and his daughters will make super replacements. 249A has an excellent production record for us. Poll/color test pending.

lot **88****ADBS** *Mr Liner* 134H

SPRINGCREEK LINER 56U
JPCC MR LINER 75B
 DRAKE TULA 1R

SPRINGCREEKWALLBANGER 11Z
ADBS MISS WALLBANGER 156C
 ADBS MISS TEDDY 152W

RCC/TCF LINE DRIVE M181
 NEVAS L93
 TCF/RCC TEMPTATION GJ640
 DCC 5N
 HARVIE JDF WALLBANGER111X
 SPRINGCREEK LINNE 72S
 WHEATLAND RED TEDDY 457P
 ADBS MISS SANDY 105S

CE	BW	WW	YW	MILK	MCE	MWWT
5.4	3.7	75.2	117.0	32.3	3.0	69.9

- ◆ POLLED PUREBRED
- ◆ BPG1342426
- ◆ ADBS 134H
- ◆ FEBRUARY 14, 2020
- ◆ BW: 94 LBS
- ◆ ACT WW: 855 LBS

Another of the attention getters in the bull pen this winter. 134H boasts incredible rib shape, tremendous muscle expression, a great hair coat and a super temperament and will mature to be pure excellence. Any way you look at him, he profiles pure power. 156C is an excellent uddered female that continues to out do herself and is an ideal female. Poll/color test pending.



lot **89** BLCC *Mr Revenue* 143H

PROFIT
WHEATLAND REVENUE 677D
 WHEATLAND LADY 935W

ERIXON DEALER 63Z
BLCC MISS DEALER 263E
 BLCC MISS POWERLINE 182W

WS PILGRIM H182U
 WAGR PANARAMA 204Z
 WHEATLAND BULL 680S
 WHEATLAND LADY 727 T
 HARVIE JDF WALLBANGER111X
 ERIXON LADY 35T
 KENCO/MF POWERLINE 204L
 TNT MISS AMERICANA E55

CE	BW	WW	YW	MILK	MCE	MWWT
3.4	5.8	79.3	117.9	22.1	0.8	61.8

- ◆ POLLED PUREBRED
- ◆ BPG1342437
- ◆ BLCC 143H
- ◆ FEBRUARY 15, 2020
- ◆ BW: 96 LBS
- ◆ ACT WW: 805 LBS

A long spined Revenue son from the E55 cow family that will sire performance and his daughters should be spectacular. 143H possesses that muscle mass and rib shape that Revenue continues to instill in his progeny. 263E is a hard-working, young female that, like her dam, will continue to raise the bar on raising high quality progeny. Poll/color test pending.

lot **90** BLCC *Mr Dealer* 155H

HARVIE JDF WALLBANGER111X
ERIXON DEALER 63Z
 ERIXON LADY 35T

BLCC MR BLACK STING 155S
BLCC MISS BLACK STING284W
 TNT MISS WHOOPIE D92

SHS ENTICER P1B
 JDF PEPSI 61U
 CNS DREAM ON L186
 TSC GLITTER
 TNT STING M377
 BLCC MISS BLACK PEARL 1P
 ER AMERICANA 537B
 HH HAPPY VELVET P091E

CE	BW	WW	YW	MILK	MCE	MWWT
6.2	5.2	81.4	123.5	20.3	2.1	61.0

- ◆ POLLED PUREBRED
- ◆ BPG1342447
- ◆ BLCC 155H
- ◆ FEBRUARY 17, 2020
- ◆ BW: 94 LBS
- ◆ ACT WW: 785 LBS

The Dealer sired progeny continue to impress us. Sons that are thick and beefy and daughters that are eye appealing, super replacements. 155H is moderate framed, has great eye appeal and is from our Whoopie D92 cow family. His daughters will be excellent producing replacements. Poll/color test pending.





lot **91** BLCC *Mr Cache Creek* 190H

KR CASH 4003 SIX MILE CACHE CREEK 804E OSU EMPRESS 3100 WHEATLAND ROYAL FLUSH 435 JPCC LINETTE 8F BLACKSAND LINETTE 834U	BARSTOW CASH SUMMITCREST ELBA 1W01 DAMERON FIRST IMPRESSION OSU EMPRESS 0135 STF ROYAL AFFAIR Z44M WHEATLAND LADY 220Z SPRINGCREEK LINER 104S SPRINGCREEK ROSE 21R
---	---

CE	BW	WW	YW	MILK	MCE	MWWT
10.0	2.2	71.9	109.3	22.7	5.0	58.7

- ◆ POLLED PUREBRED
- ◆ BPRS1342468
- ◆ BLCC 190H
- ◆ FEBRUARY 21, 2020
- ◆ BW: 82 LBS
- ◆ ACT WW: 700 LBS

A Sim-Angus herd sire prospect that has incredible rib shape, great haircoat, low birth weight and will sire some amazing daughters. His dam was purchased from the great program of JP Cattle Co. last year, where she was the high seller, being out of the great Linette 834U cow. He should sire a great calf crop, add some hybrid vigor and strong maternal in his daughters.

lot **92** BLCC *Mr Kill Switch* 197H

WHEATLAND CIRCUIT BREAKER WHEATLAND KILL SWITCH HR/RR MS CANDACE T73 CG TRACKER 45T KOP MS TRACKER 192W KOP MS KNIGHT 108R	WHEATLAND HIGHVOLTAGE122Y WHEATLAND LADY 81X REMINGTON RED LABEL HR GFI CANDACE G51 DOUBLE BAR D DRIFTWOOD 83 CG BLACK GENIE 371N KOP MR MIDNIGHT 114M KOP MS FREIGHTLINER 16M
---	---

CE	BW	WW	YW	MILK	MCE	MWWT
6.6	3.5	72.4	105.6	27.4	5.0	63.6

- ◆ POLLED PUREBRED
- ◆ PENDING
- ◆ BLCC 197H
- ◆ FEBRUARY 23, 2020
- ◆ BW: 96 LBS
- ◆ ACT WW: 790 LBS

An exciting hetero black herd sire prospect. 197H is sired by Kill Switch, whose progeny have really impressed, he is long, wide topped, great performance, super tempered and has a powerful and productive dam. 192W was one of our top picks at the KOPP dispersal and has a great production record. We are excited about this bull's future. Homo polled.





93

lot **93** ADBS *Mr 5015C* 198H

WFL ABSOLUTE 51Y
R PLUS 5015C
 IPU MS. 56U LINER 15A

KWA RED ROCK 5T
ADBS MISS RED ROCK 79Z
 ADBS MISS STING 353X

LFE STRAIT UP 454W
 WFL MS BLACK FLASH 8068U
 SPRINGCREEK LINER 56U
 RTC/JETS UPTOWN GIRL 15U
 DAY RED PEPPER DOC 984R
 KWA MS ROCK 7P
 TNT STING M377
 ADBS MISS ROXY 251R

CE	BW	WW	YW	MILK	MCE	MWWT
8.5	2.5	82.6	126.8	25.1	3.9	66.4

- ◆ POLLED PUREBRED
- ◆ ADBS 198H
- ◆ BW: 90 LBS
- ◆ BPG1342473
- ◆ FEBRUARY 23, 2020
- ◆ ACT WW: 855 LBS

A tremendous standout son of 5015C, 198H has looked the part for some time. Long, wide, deep, lots of muscle, great temperament and comes from a model female. 79Z boasts eye appeal, super capacity, excellent udder quality, and is big on production. This hetero black bull will certainly make an impact in his calf crop that will make his new owner very pleased. Poll test pending.



94

lot **94** BLCC *Mr Liner* 210H

SPRINGCREEK LINER 56U
JPCC MR LINER 75B
 DRAKE TULA 1R

KS BRAVADO P68
BLCC MISS BRAVADO 61W
 BLCC MISS STING 338T

RCC/TCF LINE DRIVE M181
 NEVAS L93
 TCF/RCC TEMPTATION GJ640
 DCC 5N
 FR REZULT
 RIV RED BRIGADIA 969J
 TNT STING M377
 BLCC MISS KARMA 64K

CE	BW	WW	YW	MILK	MCE	MWWT
7.2	3.2	74.0	114.1	28.6	7.1	65.6

- ◆ POLLED PUREBRED
- ◆ BLCC 210H
- ◆ BW: 92 LBS
- ◆ BPG1342494
- ◆ FEBRUARY 25, 2020
- ◆ ACT WW: 770 LBS

A Liner son that is long bodied, low set, has exceptional capacity and comes from a strong producing female. 210H will sire some great steers and leave some tremendous replacements. We have been very pleased with the siring ability of Liner. Hetero black. Poll test pending.

lot **95****BLCC** *Mr Revenue* 235H

PROFIT
WHEATLAND REVENUE 677D
 WHEATLAND LADY 935W

SKORS BLACK CROCKET 234Z
BLCC MISS B CROCKETT 296E
 BLCC MISS REDMOUNTAIN 21B

WS PILGRIM H182U
 WAGR PANARAMA 204Z
 WHEATLAND BULL 680S
 WHEATLAND LADY 727 T
 LBR CROCKET R81
 SKORS MS CHOCOLATE 179S
 KWA FLYF RED MOUNTAIN 16Z
 BLCC MISS RED ACE 27Z

CE	BW	WW	YW	MILK	MCE	MWWT
3.6	5.3	76.9	115.5	23.5	1.4	62.0

◆ POLLED PUREBRED ◆ BLCC 235H ◆ BW: 94 LBS
 ◆ BPG1342890 ◆ MARCH 1, 2020 ◆ ACT WW: 752 LBS

A hetero black Revenue son that is moderate, thick, has great muscle expression, super haircoat and will add docility and strong maternal traits to his daughters. 235H comes from a great young female that we are really high on and will add uniformity and consistency for all of his offspring. Poll test pending.

lot **96****BLCC** *Mr Liner* 247H

SPRINGCREEK LINER 56U
JGCC MR LINER 75B
 DRAKE TULA 1R

WHEATLAND BULL 680S
MJH ZENYATTA
 TRI-R MS X-ELLE 8X

RCC/TCF LINE DRIVE M181
 NEVAS L93
 TCF/RCC TEMPTATION GJ640
 DCC 5N
 WHEATLAND BULL 131L
 WHEATLAND LADY 351N
 R PLUS BLACKOUT
 RJR MISS 15R

CE	BW	WW	YW	MILK	MCE	MWWT
6.9	3.1	71.0	111.1	26.0	2.0	61.5

◆ POLLED PUREBRED ◆ BLCC 247H ◆ BW: 82 LBS
 ◆ BPG1342900 ◆ MARCH 7, 2020 ◆ ACT WW: 738 LBS

A low birth weight son of Liner that should work in the heifer pen, adding calving ease, performance, eye appeal and style to his progeny. 3Z is a big volume female that is easy keeping and is low maintenance. Poll/color test pending.

lot **97****BLCC** *Mr Swagger* 255H

WHEATLAND SWAGGER 343A
MAPLE LAKE 6666
 MAPLE LAKE 3266

KWA RED ROCK 5T
BLCC MISS ROCK 273Y
 BLCC MISS RED 284T

WHEATLAND PREDATOR 922W
 WHEATLAND LADY 721 T
 WHEATLAND BULL 786T
 ACS MS WILMA 265W
 DAY RED PEPPER DOC 984R
 KWA MS ROCK 7P
 LAZY S BLACK 823P
 BLCC MISS LITA 94L

CE	BW	WW	YW	MILK	MCE	MWWT
7.7	4.0	81.3	123.2	26.2	3.9	66.9

◆ POLLED PUREBRED ◆ BLCC 255H ◆ BW: 94 LBS
 ◆ BPG1342928 ◆ MARCH 8, 2020 ◆ ACT WW: 756 LBS

Hetero black. The natural calf from our Red Rock flush cow, 273Y. 255H is a hairy, long bodied, soggy made Swagger son that is full of capacity, muscle and comes from a powerful mother cow. He will have the ability to sire uniformity and profitability and his daughters will be powerful producers. Poll test pending.



FULLBLOODS



98

lot **98** BLCC *Mr SL Dealer* 38G

CHAMPS ROMANO	SMITHBILT MOLSON 21M
SILVER LAKE DEALER 60B	CHAMPS PRICILLA
BLCC MISS STRIDE 57W	BAR 5 SA STRIDE 413P
	BLCC MISS REGAN 253S
BLCC HEARTLAND 434X	SHAWACRES JAHARI 50L
BLCC MISS HEARTLAND 117C	MFI MISS FEODORA 3117
BLCC MISS EVAN 196U	MF MR. EVAN 14P
	BLCC MISS HALLE 38H

CE	BW	WW	YW	MILK	MCE	MWWT
2.5	7.0	70.6	105.6	37.3	1.1	72.6

- ◆ HORNED FULL BLOOD
- ◆ BLCC 38G
- ◆ BW: 88 LBS
- ◆ 1328404
- ◆ FEBRUARY 13, 2019
- ◆ ACT WW: 780 LBS

Well, my oh my did 117C outdo herself on this set of bull calves. Another son of Silver Lake Dealer that is big topped and perhaps a rib longer than his brother. The consistency of stoutness, substance and style between the Dealer calves speak volumes when you receive such a uniform group every year. You can expect 38G to follow this lead to give you good sons and terrific daughters. Comes out of a big volume cow that milks well and clearly raises them right.

lot **99** BLCC *Mr SL Dealer* 39G

CHAMPS ROMANO
SILVER LAKE DEALER 60B
 BLCC MISS STRIDE 57W

 BLCC HEARTLAND 434X
BLCC MISS HEARTLAND 117C
 BLCC MISS EVAN 196U

SMITHBILT MOLSON 21M
 CHAMPS PRICILLA
 BAR 5 SA STRIDE 413P
 BLCC MISS REGAN 253S
 SHAWACRES JAHARI 50L
 MFI MISS FEODORA 3117
 MF MR. EVAN 14P
 BLCC MISS HALLE 38H

CE	BW	WW	YW	MILK	MCE	MWWT
2.5	7.0	70.6	105.6	37.3	1.1	72.6

- ◆ **HORNED FULL BLOOD** ◆ BLCC 39G ◆ **BW: 90 LBS**
- ◆ **1328405** ◆ **FEBRUARY 13, 2019** ◆ **ACT WW: 745 LBS**

A full sibling to 38G, another terrific Silver Lake Dealer son that fits in line with all the rest. A meaty bull that will have the ability to sire some very useful progeny. 39G displays great capacity, exceptional depth and comes from a large framed, big ribbed, big footed female that milks very well. This bull would be a great female producer just like his sire.



lot **100** BLCC *Mr SL Dealer* 99G

CHAMPS ROMANO
SILVER LAKE DEALER 60B
 BLCC MISS STRIDE 57W

 BLCC MR BARON 183Z
BLCC MISS BARONESS 199C
 GRINALTA'S GRANDMA MOSES

SMITHBILT MOLSON 21M
 CHAMPS PRICILLA
 BAR 5 SA STRIDE 413P
 BLCC MISS REGAN 253S
 BHR BARON SA 2842P
 MFI LOLITA 8046
 GREAT GUNS MOSES 50D
 JB HONOUR 41H

CE	BW	WW	YW	MILK	MCE	MWWT
2.2	6.9	74.7	113.3	39.8	-1.6	77.2

- ◆ **HORNED FULL BLOOD** ◆ BLCC 99G ◆ **BW: 96 LBS**
- ◆ **1328448** ◆ **FEBRUARY 20, 2019** ◆ **ACT WW: 790 LBS**

Here is a Full Fleckvieh bull that looks like he's got extra ribs because he has got some serious length! Length is everything. We love this guy, deep, smooth, so correct and just structurally built right. We can't express enough how much we love the consistency in these Silver Lake Dealers. Mothered by a very eye appealing, great uddered, good young cow that goes back to the proven cow family Grandma Moses 41K cow in our flush program, 199C is also a full sister to BLCC Reputation 357Y that was a herd sire at Cross Road Farms. A very proven bull that has guess work taken out for you.



lot **101** BLCC *Mr SL Dealer* 108G

CHAMPS ROMANO
SILVER LAKE DEALER 60B
 BLCC MISS STRIDE 57W

 MFI JEREMIAH 9022
BLCC MISS JUGGERNAUT 354A
 BLCC MISS HOUSTON 132S

SMITHBILT MOLSON 21M
 CHAMPS PRICILLA
 BAR 5 SA STRIDE 413P
 BLCC MISS REGAN 253S
 GIBBONS JEREMIAH
 MFI PETRA 2093
 PRL HOUSTON 005H
 CREST'S-VIEW NICOLETTE

CE	BW	WW	YW	MILK	MCE	MWWT
2.3	7.3	77.2	113.9	40.9	-0.3	79.5

- ◆ **HORNED FULL BLOOD** ◆ BLCC 108G ◆ **BW: 98 LBS**
- ◆ **1345549** ◆ **FEBRUARY 21, 2019** ◆ **ACT WW: 825 LBS**

Here's a bull that will add an impressive calf crop full of red meat and muscle that should be above average! 108G is a wide topped bull loaded with length, rib shape, capacity and super eye appeal and comes from a great producer. 354A is a big framed Juggernaut daughter who is excellent uddered and milks fantastic. There should be as much predictability in this bull as any in the sale.



lot **102** BLCC *Mr Value* 147G



102

DOUBLE BAR D SPITFIRE 20X
STARWEST TOTAL VALUE
 PHS POLLED WINFALL 27W

GRINALTA'S SUPERB DP106R
BLCC MISS SUPERB 272W
 BLCC MISS HOUSTON 6S

DOUBLE BAR D EVEREST 103U
 VIRGINIA MS TREASURE 4T
 SOLWAY ADONIS
 BAR 5 P FF BELLE 1402S
 BAR 5 P SA EXPERT 826M
 GRINALTA'S LADY LUCK
 PRL HOUSTON 005H
 BLCC MISS 160P

CE	BW	WW	YW	MILK	MCE	MWWT
0.6	7.0	80.9	121.7	30.3	-0.6	70.8

- ◆ POLLED FULL BLOOD
- ◆ P1344962
- ◆ BLCC 147G
- ◆ FEBRUARY 24, 2019
- ◆ BW: 106 LBS
- ◆ ACT WW: 810 LBS

A polled, heavily pigmented Total Value son that is longer than a bad dream. The Total Value daughters were very well accepted in last year's heifer sale as our high selling fullblood was Total Value. So much style with this one and he packs a lot of punch in his back end that will carry down to his progeny. Mothered by a bigger framed, heavy milking female. Stacked with proven cow families that have more than exceeded our expectations. This guy will be easily found on sale day.



103

lot **103** BLCC *Mr Houston* 156G

ROGANT
PRL HOUSTON 005H
 MS PRL NITE-ANCHOR 109B

MFI JEREMIAH 9022
BLCC MISS JUGGERNAUT 191C
 WCC WELLS' WEDNESDAY 927W

ROGER
 LORIS
 MR PRL ANCHOR 088Y
 MISS KNIGHT 156S
 GIBBONS JEREMIAH
 MFI PETRA 2093
 CEN RENEGADE 504R
 SS SAFARA 13S FF

CE	BW	WW	YW	MILK	MCE	MWWT
2.2	6.5	73.8	108.4	39.3	1.3	76.2

- ◆ HORNED FULL BLOOD
- ◆ 1328501
- ◆ BLCC 156G
- ◆ FEBRUARY 25, 2019
- ◆ BW: 96 LBS
- ◆ ACT WW: 790 LBS

Full Fleckvieh. If you want a bull that has the guesswork taken out of it look at 156G. The natural muscle, depth of body, do-ability and big wide top this guy has is the type we like; the beefy type. Houston put us on the map and no question has proven in both his sons and daughters the elite quality cattle that they are. Comes from a long bodied, big volumed, big goggled, quiet Juggernaut dam who goes back to 927W in our flush program. Both here and at Double Bar D, Juggernaut has displayed the immensely capable and stylish progeny that are well known in our breed. Top and bottom this is a proven bull that will have the ability to become a cornerstone herd sire.



lot **104** BLCC *Mr Dealer* 218G

CHAMPS ROMANO
SILVER LAKE DEALER 60B
 BLCC MISS STRIDE 57W

BHR BARON SA 2842P
BLCC MISS BARONESS 133Z
 MFI HELGA 8100

SMITHBILT MOLSON 21M
 CHAMPS PRICILLA
 BAR 5 SA STRIDE 413P
 BLCC MISS REGAN 253S
 KYKSO HADAU
 TRANS-MAGALIES MABIE
 SHAWACRES JAHARI 50L
 ANCHOR "T" SANDI 83L

CE	BW	WW	YW	MILK	MCE	MWWT
2.6	6.5	73.6	107.8	36.9	-1.0	73.7

◆ **HORNED FULL BLOOD** ◆ **BLCC 218G** ◆ **BW: 102 LBS**
 ◆ **1345550** ◆ **MARCH 2, 2019** ◆ **ACT WW: 794 LBS**

Full Fleckvieh. Frame is pounds and pounds means more money in your pocket. There is no lack of power or performance with this fella. Everything BIG; big ribbed, big scrotum, big frame, big muscled! Comes out of an awesome cow family we acquired at Murray Farms, great fleckvieh genetics that have worked out very well for us. This is a bull that will tackle a heavy service this spring!

lot **105** BLCC *Mr Harry* 247G

VIRGINIA WALKER 97W
SIBELLE DIRTY HARRY 25Z
 SIBELLE GOLDA

PRL HOUSTON 005H
BLCC MISS HOUSTON 78W
 BLCC MISS KIMBERLY 74K

CHAMPS ROMANO
 VIRGINIA MS. NECKLACE 97N
 PRL HOUSTON 005H
 SIBELLE AZALEE

ROGANT
 MS PRL NITE-ANCHOR 109B
 FS MR DYNASTY 345C
 SUNNY VALLEY DIAMOND 5G

CE	BW	WW	YW	MILK	MCE	MWWT
5.1	5.4	75.6	109.5	35.8	3.3	73.6

◆ **HORNED FULL BLOOD** ◆ **BLCC 247G** ◆ **BW: 96 LBS**
 ◆ **1328554** ◆ **MARCH 5, 2019** ◆ **ACT WW: 770 LBS**

A Dirty Harry son who won't doesn't need any babysitting to get dirty with your cows this spring! He's a bull that will bring pounds, performance and predictability into your program. With this bull's terrific phenotype and natural eye appeal along with a model herd building Houston dam, 78W there's a lot to be sure about. 78W has the Houston milk, big footed and heavy eye appeal. She has a fantastic production record and has never come home dry.





lot **106** BLCC *Mr United* 252G

MFL UNIVERSE 28U
DOUBLE BAR D UNITED 176A
 MFI PETRA 4077

SU RIO GRANDE 55R
BLCC MISS GRANDE 107T
 BLCC MISS 62N

BOLD
 MFL PETRA 95P
 SHAWACRES JAHARI 50L
 MFI PETRA 1053
 IPU ENDEVOR 75M
 SU KAMEO 55K
 PRL HOUSTON 005H
 RENDEZVOUS 61F

CE	BW	WW	YW	MILK	MCE	MWWT
1.7	6.2	63.6	94.6	28.4	-2.2	60.2

- ◆ HORNED FULL BLOOD
- ◆ BLCC 252G
- ◆ BW: 94 LBS
- ◆ 1328559
- ◆ MARCH 6, 2019
- ◆ ACT WW: 785 LBS

Talk about hitting a home run with this United son because he is the real deal. A really neat bull possessing superior depth head to tail, great length, wide topped and immense eye appeal. The United daughters were very well received in our past female sale. He is heavily pigmented and comes out of a cow with a very good production record for us with some amazing sons and daughters, even with her age she is excellent uddered with a great temper and milks well, the cow family behind her is very strong.



lot **107** BLCC *Mr Future* 322G

CROSSROAD VINTAGE 125Z
CROSSROAD POLLED FUTURE
 CROSSROAD ZELESTE 19Z

BHR BARON SA 2842P
BLCC MISS BARONESS 309Z
 BLCC MISS ADONIS 428U

SOLWAY ADONIS
 FTS ENDORA 163P
 CROSSROAD TUXEDO 222T
 CROSSROAD STARLA 473S
 KYKSO HADAU
 TRANS-MAGALIES MABIE
 DOUBLE BAR D ADONIS 603N
 GRINALTA'S LELA

CE	BW	WW	YW	MILK	MCE	MWWT
2.9	5.2	60.9	83.8	38.2	-3.8	68.7

- ◆ HORNED FULL BLOOD
- ◆ BLCC 322G
- ◆ BW: 92 LBS
- ◆ 1328873
- ◆ MARCH 26, 2019
- ◆ ACT WW: 735 LBS

A Full Fleckvieh, dark cherry red bull with a future as big as his back end! Lots of body on this guy through the quarter, top and middle. He is full in all the right places and just has "HERD BULL" written all over him. 309Z is a full fleck, moderate framed female with the same dark red color that is big footed and milks like a dream. 322G will be ready for heavy service.



108

lot **108** BLCC *Mr SL Dealer* 336G

CHAMPS ROMANO
SILVER LAKE DEALER 60B
 BLCC MISS STRIDE 57W

MFI JEREMIAH 9022
BLCC MISS JUGGERNAUT 248B
 BLCC MISS EVAN 86U

SMITHBILT MOLSON 21M
 CHAMPS PRICILLA
 BAR 5 SA STRIDE 413P
 BLCC MISS REGAN 253S
 GIBBONS JEREMIAH
 MFI PETRA 2093
 MF MR. EVAN 14P
 BLCC MISS 100P

CE	BW	WW	YW	MILK	MCE	MWWT
2.2	7.8	80.0	116.1	38.7	-0.2	78.7

◆ HORNED FULL BLOOD
 ◆ 1328897

◆ BLCC 336G
 ◆ MARCH 31, 2019

◆ BW: -
 ◆ ACT WW: 675 LBS

It speaks for itself when you can use a bloodline for so many years and get both great sons and terrific daughters with Silver Lake Dealer. Going through the catalogue you can see the uniformity, stoutness, length and do-ability in all of his progeny. 336G is a big framed bull with exceptional depth and amazing color. Comes from a great Juggernaut female. The guesswork is taken out here folks, consistency is no accident.



lot **109** BLCC *Mr SL Dealer* 184H

CHAMPS ROMANO SILVER LAKE DEALER 60B BLCC MISS STRIDE 57W	SMITHBILT MOLSON 21M CHAMPS PRICILLA BAR 5 SA STRIDE 413P BLCC MISS REGAN 253S BAR 5 P SA EXPERT 826M GRINALTA'S LADY LUCK PRL HOUSTON 005H BLCC MISS 160P
GRINALTA'S SUPERB DP106R BLCC MISS SUPERB 272W BLCC MISS HOUSTON 6S	

CE	BW	WW	YW	MILK	MCE	MWWT
2.2	7.8	75.9	112.1	35.5	1.5	73.5

- ◆ POLLED FULL BLOOD
- ◆ P1342463
- ◆ BLCC 184H
- ◆ FEBRUARY 20, 2020
- ◆ BW: 104 LBS
- ◆ ACT WW: 780 LBS

Polled/scurred, deep, thick, big barreled and long best describes this Silver Lake Dealer son. His dark red color and great goggle eyed pigmentation is just icing on the cake. His dam, 272W has been a proven producer for us year and year again. 184H is a bull that will add pounds, performance and predictability to your next year's calf crop. He will sire some great steers and his daughters will be exceptional.

lot **110** BLCC *Mr Future* 191H

CROSSROAD VINTAGE 125Z CROSSROAD POLLED FUTURE CROSSROAD ZELESTE 19Z	SOLWAY ADONIS FTS ENDORA 163P CROSSROAD TUXEDO 222T CROSSROAD STARLA 473S NAC UNION'S LEGACY 29L NORTHERN LIGHT MSMAGIC33J GIDSCO APOLLO 3F BLCC MISS JEWEL 50J
NCK RENEGADE 16R BLCC MISS RENEGADE 55A BLCC MISS APOLLO 58S	

CE	BW	WW	YW	MILK	MCE	MWWT
3.1	4.6	61.3	85.2	36.2	-0.6	66.9

- ◆ POLLED FULL BLOOD
- ◆ P1342469
- ◆ BLCC 191H
- ◆ FEBRUARY 21, 2020
- ◆ BW: 90 LBS
- ◆ ACT WW: 770 LBS

Another polled son of Polled Future who is a real eye catcher with his dark color and heavy pigment. Here's one that will mature to be a top end herd sire of preferable progeny. Excellent rib shape, hind quarter, structure, frame and eye appeal with this bull.





lot **111** BLCC *Mr SL Dealer* 192H

CHAMPS ROMANO SILVER LAKE DEALER 60B BLCC MISS STRIDE 57W	SMITHBILT MOLSON 21M CHAMPS PRICILLA BAR 5 SA STRIDE 413P BLCC MISS REGAN 253S NAC UNION'S LEGACY 29L NORTHERN LIGHT MSMAGIC33J SU ROCHESTER 75R BLCC MISS 121P
NCK RENEGADE 16R BLCC MISS RENEGADE 58A BLCC MISS ROSS 309T	

CE	BW	WW	YW	MILK	MCE	MWWT
3.0	6.8	72.9	107.5	36.4	2.4	72.9

- ◆ HORNED FULL BLOOD
- ◆ BLCC 192H
- ◆ BW: 94 LBS
- ◆ 1342470
- ◆ FEBRUARY 22, 2020
- ◆ ACT WW: 790 LBS

Full Fleckvieh. Another very powerful Silver Lake Dealer son that ticks all the boxes. The length of body, extremely wide top and amount of natural muscle through the back end 192H possesses along with his overall eye appeal will allow him to mature into an impeccable herd sire that will raise high quality, uniform bulls and females just as his sire has. 58A is a hard working dam that milks extremely well and brings in a hell of a calf every year.

lot **112** BLCC *Mr SL Dealer* 204H

CHAMPS ROMANO SILVER LAKE DEALER 60B BLCC MISS STRIDE 57W	SMITHBILT MOLSON 21M CHAMPS PRICILLA BAR 5 SA STRIDE 413P BLCC MISS REGAN 253S CROSSROAD VINTAGE 125Z CROSSROAD ZELESTE 19Z BLCC HEARTLAND 434X BLCC MISS 36R
CROSSROAD POLLED FUTURE BLCC MISS FUTURE 183E BLCC MISS HEARTLAND 200B	

CE	BW	WW	YW	MILK	MCE	MWWT
3.1	6.9	74.9	109.6	39.9	0.2	77.4

- ◆ HORNED FULL BLOOD
- ◆ BLCC 204H
- ◆ BW: 96 LBS
- ◆ 1342484
- ◆ FEBRUARY 24, 2020
- ◆ ACT WW: 785 LBS

If you're looking for a bull to make an impact on your herds performance and maternal capabilities then 204H is the bull for you. His length, exceptional depth of body, do-ability and his dark color will be passed onto his babies giving you a calf crop that is predictable and profitable. 183E is a bull you can buy with confidence.





lot **113** BLCC *Mr SL Dealer* 228H

CHAMPS ROMANO SILVER LAKE DEALER 60B BLCC MISS STRIDE 57W	SMITHBILT MOLSON 21M CHAMPS PRICILLA BAR 5 SA STRIDE 413P BLCC MISS REGAN 253S DOUBLE BAR D ADONIS 603N MRLN JOSCELINE MSS JASPER 17J BLCC MISS MELANIE 19M
DOUBLE BAR D AUTOBAHN BLCC MISS AUTOBAHN 378Y BLCC MISS JASPER 279S	

CE	BW	WW	YW	MILK	MCE	MWWT
2.4	6.8	69.8	104.2	36.8	1.4	71.7

- ◆ HORNED FULL BLOOD
- ◆ 1342881
- ◆ BLCC 228H
- ◆ FEBRUARY 28, 2020
- ◆ BW: 98 LBS
- ◆ ACT WW: 770 LBS

Another typical Silver Lake Dealer son that is a meaty unit that brings it all. Between the abundance of rib shape, depth of quarter, natural eye appeal and coming from a tremendous dam this bull possesses the qualities to be an outstanding sire to pass on these traits to any program. 378Y has been nothing but an excellent producer and has raised us many top sons and daughters.

lot **114** BLCC *Mr Rocky* 251H

LFS POL BALBOA 40U SILVERLAKE ROCKY 238C SILVERLAKE ISLA	DAYTON'S POL NEUMANN RRV NATALIE SILVERLAKE STORM K&S LUCKY LADY 11N CHAMPS ROMANO BLCC MISS STRIDE 57W MF MR. EVAN 14P BLCC MISS 58N
SILVER LAKE DEALER 60B BLCC MISS SL DEALER 130E BLCC MISS EVAN 79W	

CE	BW	WW	YW	MILK	MCE	MWWT
2.4	6.5	77.8	110.1	36.4	1.7	75.3

- ◆ HORNED FULL BLOOD
- ◆ 1342902
- ◆ BLCC 251H
- ◆ MARCH 7, 2020
- ◆ BW: 96 LBS
- ◆ ACT WW: 773 LBS

If you like lengthy, thick, moderate, attractive cattle then 251H is one to look at! A very correct made bull with great feet, smooth head to tail and has that dark cherry red color that makes your mouth water. To top it off his naturally quiet demeanor makes him a real catch.



lot **115****BLCC** *Mr Rocky* 265HLFS POL BALBOA 40U
SILVERLAKE ROCKY 238C
SILVERLAKE ISLAG-SEVEN MR 54P
BLCC MISS 54P 198X
BLCC MISS GRANDE 107TDAYTON'S POL NEUMANN
RRV NATALIE
SILVERLAKE STORM
K&S LUCKY LADY 11N
BAR 5 SA EVAN 440L
SUNNY VALLEY JESSIE 54J
SU RIO GRANDE 55R
BLCC MISS 62N

CE	BW	WW	YW	MILK	MCE	MWWT
3.8	4.8	71.9	97.8	36.6	1.8	72.6

- ◆ POLLED FULL BLOOD
- ◆ P1342935
- ◆ BLCC 265H
- ◆ MARCH 10, 2020
- ◆ BW: 90 LBS
- ◆ ACT WW: 740 LBS

Here is a polled, extremely wide, topped easy doing Rocky son. As we say length is everything and this guy has definitely got it! He's got a great set of feet on him with loads of hair and a great temperament. Comes from 198X who has time and time again been a great producer for us and just keeps on raising the goods one. Great pedigrees, great results.

lot **116****BLCC** *Mr Rocky* 294HLFS POL BALBOA 40U
SILVERLAKE ROCKY 238C
SILVERLAKE ISLABLCC HEARTLAND 434X
BLCC MISS HEARTLAND 222B
BLCC MISS 54P 198XDAYTON'S POL NEUMANN
RRV NATALIE
SILVERLAKE STORM
K&S LUCKY LADY 11N
SHAWACRES JAHARI 50L
MFI MISS FEODORA 3117
G-SEVEN MR 54P
BLCC MISS GRANDE 107T

CE	BW	WW	YW	MILK	MCE	MWWT
2.2	5.1	70.7	98.2	37.4	-0.6	72.8

- ◆ POLLED FULL BLOOD
- ◆ P1342956
- ◆ BLCC 294H
- ◆ MARCH 17, 2020
- ◆ BW: 90 LBS
- ◆ ACT WW: 720 LBS

Polled and the youngest fullblood of the group but 294H gives up absolutely nothing to his pen mates when it comes to performance and do-ability. Another Rocky son made to impress with his big barreled, wide topped, long bodied type of style that just screams EYE APPEAL! Comes out of a long bodied, heavy milking cow that puts a great effort in every year. A prospect that will bring a positive influence to any herd.

REFERENCE SIRE



Kuntz Sheriff 8A

ref **SIRE** **KUNTZ Sheriff 8A**

BMD RED WALKING TALL 13W
KUNTZ MARSHALL 12Y
 TIMBER WENDY 3W

MUIRHEAD'S KOSMO 27N
PEACOCK'S LI'L NETTIE 23Y
 MUIRHEAD NETTIE 5W

TESS PINNACLE 611S
 RAINALTA TOMBOY DYNAMITE 74S
 LFE BOMBSHELL 508N
 TIMBER TRINA 3T
 JDN CISCO'S PRIDE 10K
 CZAR MS KONZES REWARD 97G
 KS BRAVADO P68
 KIMLAKE NETTIE 742T

CE	BW	WW	YW	MILK	MCE	MWWT
19.0	-4.1	65.6	103.6	33.4	8.8	66.2

- ◆ POLLED PUREBRED
- ◆ PG794268
- ◆ KNTZ 8A
- ◆ JANUARY 21, 2013



KOP Crosby 137W

ref **SIRE** **KOP Crosby 137W**

KENCO/MF POWERLINE 204L
MUIRHEAD LIVE WIRE 95R
 GFP MISS BEARCLAW 100M

R PLUS 2169M
KOP MS BENGIE 6P
 KOP MS FREIGHTLINER 34M

HC POWER DRIVE 88H
 SAFN GLAMOUR 11J
 PRAIRIE WIND BEARCLAW 55K
 GFP MISS RED DOC 100J
 IPU BLACK STEAKHOUSE 34H
 SOUTHOLDEN MISSEDRED 2H
 SMITHBILT FREIGHTLINER91J
 KOP MS JUPITER 731J

CE	BW	WW	YW	MILK	MCE	MWWT
1.3	7.0	85.4	123.0	35.2	7.2	77.9

- ◆ POLLED PUREBRED
- ◆ PG718093
- ◆ KOP 137W
- ◆ JANUARY 26, 2009



Wheatland Kill Switch

ref **SIRE** **WHEATLAND Kill Switch**

WHEATLAND HIGHVOLTAGE122Y
WHEATLAND CIRCUIT BREAKER
 WHEATLAND LADY 81X

REMINGTON RED LABEL HR
HR/RR MS CANDACE T73
 GFI CANDACE G51

WHEATLAND PREDATOR 922W
 WHEATLAND LADY 736 T
 STF DOMINANCE T171
 WHEATLAND LADY 902J
 CNS DREAM ON L186
 HS REFLECTIONS J34
 GW SOLID FLECK
 GFI DELTA DAWN D123

CE	BW	WW	YW	MILK	MCE	MWWT
9.2	3.3	80.1	112.2	27.0	6.5	67.1

- ◆ POLLED PUREBRED
- ◆ PG1166945
- ◆ LER 598C
- ◆ FEBRUARY 26, 2015



BLCC Mr Sheriff 327E

ref **SIRE** **BLCC Mr Sheriff 327E**

KUNTZ MARSHALL 12Y
KUNTZ SHERIFF 8A
 PEACOCK'S LI'L NETTIE 23Y

SKORS BLACK CROCKET 234Z
BLCC MISS CROCKETT 295C
 BLCC MISS RED 213U

BMD RED WALKING TALL 13W
 TIMBER WENDY 3W
 MUIRHEAD'S KOSMO 27N
 MUIRHEAD NETTIE 5W
 LBR CROCKET R81
 SKORS MS CHOCOLATE 179S
 LAZY S BLACK 823P
 BLCC MISS 214R

CE	BW	WW	YW	MILK	MCE	MWWT
13.3	-0.5	76.0	116.6	32.0	7.5	70.0

- ◆ POLLED PUREBRED
- ◆ BPG1252885
- ◆ BLCC 327E
- ◆ MARCH 29, 2017

REFERENCE SIREs

^{ref} **SIRE** **WHEATLAND** *Revenue* 677D

WS PILGRIM H182U
PROFIT
WAGR PANARAMA 204Z

WHEATLAND BULL 680S
WHEATLAND LADY 935W
WHEATLAND LADY 727T

CNS DREAM ON L186
WS MARLA 276M
MR HOC BROKER
3C MELODY M668 BZ
WHEATLAND BULL 131L
WHEATLAND LADY 351N
WHEATLAND BULL 468P
WHEATLAND MISS 917J

CE	BW	WW	YW	MILK	MCE	MWWT
4.1	4.5	75.7	109.8	21.1	1.1	59.0

◆ POLLED PUREBRED
◆ BPG1196326

◆ LER 677D
◆ MARCH 12, 2016



Wheatland Revenue 677D

^{ref} **SIRE** **R PLUS** 5015C

LFE STRAIT UP 454W
WFL ABSOLUTE 51Y
WFL MS BLACK FLASH 8068U

SPRINGCREEK LINER 56U
IPU MS. 56U LINER 15A
RTC/JETS UPTOWN GIRL 15U

LFE MR LEWIS 514N
LFE RS AMBER 216T
R PLUS BLACKEDGE
WFL MS RED FLASH 136P
RCC/TCF LINE DRIVE M181
NEVAS L93
TNT GUNNER N208
3D MISS BLACK KATIE 461P

CE	BW	WW	YW	MILK	MCE	MWWT
7.1	1.8	89.1	139.8	20.1	0.0	64.7

◆ POLLED PUREBRED
◆ BPG1160943

◆ LRPS 5015C
◆ JANUARY 24, 2015



R Plus 5015C

^{ref} **SIRE** **CROSSROAD POLLED** *Future*

SOLWAY ADONIS
CROSSROAD VINTAGE 125Z
FTS ENDORA 163P

CROSSROAD TUXEDO 222T
CROSSROAD ZELESTE 19Z
CROSSROAD STARLA 473S

SCOTTISH NEFF
BLYTHE
BAR 5 SA EVAN 440L
JACK PINE ELSA 52F
DOUBLE BAR D EVEREST 4R
MISS ARNOLD K5934
JACK PINE BANJO FF112H
CROSSROAD NICOLE 239N

CE	BW	WW	YW	MILK	MCE	MWWT
4.0	5.1	60.8	82.2	38.7	-3.6	69.1

◆ POLLED FULLBLOOD
◆ P1135883

◆ CRF 35C
◆ JANUARY 10, 2015



Crossroad Polled Future

^{ref} **SIRE** **SILVER LAKE** *Dealer* 60B

SMITHBILT MOLSON 21M
CHAMPS ROMANO
CHAMPS PRICILLA

BAR 5 SA STRIDE 413P
BLCC MISS STRIDE 57W
BLCC MISS REGAN 253S

GIDSCO APPOLLO 3F
JERICO'S DEIRDRE 21D
SHAWACRES JAHARI 50L
RU-BENS LIZ 96L
DORSIM MASSIE
TOVERBERG ERIKA
BAR NONE REGAN
BLCC MISS 232N

CE	BW	WW	YW	MILK	MCE	MWWT
4.4	7.2	76.5	115.6	40.3	2.9	78.6

◆ HORNED FULLBLOOD
◆ T1136892

◆ MARC 60B
◆ JANUARY 29, 2014



Silverlake Dealer 60B

REFERENCE SIRE



Erixon Dealer 63Z

ref **SIRE** *ERIXON Dealer 63Z*

SHS ENTICER P1B	TCF/RCC TEMPTATION GJ640
HARVIE JDF WALLBANGER111X	ROCKY HILLS JO
JDF PEPSI 61U	REMINGTON ON TARGET 2S
	JDF MATTIE 61R
CNS DREAM ON L186	NICHOLS LEGACY G151
ERIXON LADY 35T	CNS SHEEZA DREAM K107W
TSC GLITTER	PPSR BLACK AVENGER
	TSC GLAMOUR 799H

CE	BW	WW	YW	MILK	MCE	MWWT
5.8	6.1	96.0	150.0	21.2	1.2	69.2

◆ POLLED PUREBRED ◆ BOBE 63Z
 ◆ BPG763321 ◆ JANUARY 17, 2012



Maple Lake 6666

ref **SIRE** *Maple Lake 6666*

WHEATLAND PREDATOR 922W	WHEATLAND BULL 680S
WHEATLAND SWAGGER 343A	WHEATLAND LADY 752 T
WHEATLAND LADY 721 T	WHEATLAND'S INFERNO 325N
	WHEATLAND LADY 444P
WHEATLAND BULL 786T	WHEATLAND BULL 131L
MAPLE LAKE 3266	WHEATLAND LADY 351N
ACS MS WILMA 265W	TNT TOP GUN R244
	HAAS RANCH G217

CE	BW	WW	YW	MILK	MCE	MWWT
6.9	4.2	80.3	121.7	20.9	1.4	61.1

◆ POLLED PUREBRED ◆ ML 6666D
 ◆ BPG1167152 ◆ JANUARY 24, 2016



JPCC Mr Liner 75B

ref **SIRE** *JPCC Mr Liner 75B*

RCC/TCF LINE DRIVE M181	HC POWER DRIVE 88H
SPRINGCREEK LINER 56U	BOZ SWEET TEMPTATION
NEVAS L93	TNT BLACK SHADOW J30
	NEVAS BLACK FOOT H819
TCF/RCC TEMPTATION GJ640	TE MCCLINTOCK G28
DRAKE TULA 1R	BOZ SWEET TEMPTATION
DCC 5N	DJ PITCH J522
	RRL ANNA 110H

CE	BW	WW	YW	MILK	MCE	MWWT
6.8	2.2	71.8	113.4	34.0	5.8	69.9

◆ POLLED PUREBRED ◆ JLP 75B
 ◆ BPTG1124351 ◆ JANUARY 22, 2014

VIDEOS OF ALL BULLS AVAILABLE ON
WWW.DLMS.CA & WWW.BUYAGRO.COM

TERMS & CONDITIONS

TERMS

The terms of the sale are cash or cheque, payable at par at the sale location. The right of property shall not pass until after settlement has been made; no invoicing on buyers in attendance unless previous arrangements have been made. Every animal sells to the highest bidder and in cases of disputes, the auctioneer's decision will be final. Announcements from the auction block will take precedence over the printed matter in the catalogue. Current exchange rates will be announced sale day. All monies are in Canadian funds.

CERTIFICATE OF REGISTRATION

Each animal will carry papers issued by the Canadian Simmental Association. A certificate of registry duly transferred will be furnished to the buyer for each animal after payment has been made.

PEDIGREE ESTIMATES

Pedigree Estimates (PE) are created on the projected mating of the animal's sire and dam based on averages of the two, creating estimated values that do not hold the same accuracy of actual EPDs issued from the association and should be used as such.

HEALTH

All animals in the sale have met all necessary health requirements.

GUARANTEE

Each animal becomes the purchaser's risk immediately after the animal is sold. All animals in this sale will be sold under the terms and guarantees set forth by the Canadian Simmental Association with regards to health, freedom from defects and from both reproductive and specific genetic unsoundness.

LIABILITIES

All persons attend the sale at their own risk. The seller, facility owner and sale manager assume no liability, legal or otherwise, for any accidents that occur. It is understood that T Bar C Cattle Co. (2013) Ltd. is acting only as a medium between buyer and seller and is not responsible for any failure on the part of either party to live up to his obligations. Neither does T Bar C Cattle Co. (2013) Ltd. assume any financial obligations to collect or enforce collection of any monies between parties and any legal action that may, in exceptional cases, be taken must be between the buyer and the seller. T Bar C Cattle Co. (2013) Ltd. assumes no responsibility for any credit extended by the seller to the buyer. The buyer must look to the seller for fulfillment of all guarantees and representations made hereunder.

PHONE, MAIL, WIRE BIDS

Bidders unable to attend the sale may phone, wire or mail their bids and instructions to the sale manager, auctioneer or special representatives. Bids must be received in sufficient time prior to the sale.

INSURANCE

We strongly recommend that insurance is purchased for full value.

ERRORS

All announcements at sale time, written or oral, supersede any written material in the catalogue.

DELIVERY

Shipping assistance will be given in making shipment after sale but sale management or seller assumes no risk. Bonchuk Farms will assist in arranging trucking to central points across Canada. All costs associated with shipping will be the responsibility of the new owner. Each animal becomes the risk of the purchaser as soon as sold.

HERD HEALTH

All bred cattle received Express 5 before breeding and Total Herd has been on the Express program for over 10 years, making the ranch BVD-free. Bred heifers also received black leg vaccine before breeding. All pregnant cattle have their first shot of Scour-Bos vaccine and treated with Ivomec.

Bonchuk Farms reserve the right to draw semen on any of the sale bulls for in herd use at the buyer's convenience.

Return Undeliverable
Canadian Addresses To:

T Bar C Cattle Co. Ltd.
Box 2330
Warman, SK
S0K 4S0



BLCC

CREATED BY

